



1989 - 2018

# Addiscombe & Shirley Park Residents' Association

[www.theaspra.org.uk](http://www.theaspra.org.uk)

Spring 2018

**Celebrating  
the new and  
the old in  
Addiscombe  
village**





# Assured Preservations Ltd.

WOODWORM • DRY ROT • RISING DAMP

## Assured Preservations

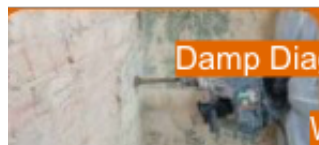
Assured Preservations Ltd. have been providing specialist damp proofing and structural waterproofing services throughout London and Surrey for over fifteen years. Many of our customers come to us following recommendations from their friends and neighbours, and we strive to provide a high level of customer service.

Most of our treatments come with a guarantee of up to thirty years, free of charge.

All our surveyors are qualified CSRT specialists, and staff members have all been working in the damp proofing industry for many years.

If you have any questions about dampness in your home, or the remedial treatments we offer, please do not hesitate to give us a call on our Freephone number.

### Our Services include



Damp Diagnosis & Treatment

Waterproofing, Tanking & Rendering



Woodworm Treatment

## Contact Assured Preservations

Freephone: 0800 731 8739

enquiries@assuredpres.co.uk

Head Office:

153a Shirley Road

Croydon

Surrey

CR0 8SS



Flood Remediation Dry Rot Decay Wet Rot Decay Wood Worm Infestation

## From the editor

March may seem a little late for you to be receiving New Year greetings, but this is our first issue of 2018 and, although Spring may be in the air, the newness afforded by the Christmas 'winterlude' is still with us, we hope.

Coming out of winter's hibernation, and looking around our neighbourhood, we've been made aware of new things happening to old establishments. In recording some of these for this issue of the magazine, we've almost unconsciously arrived at a running theme contrasting the old and the new round about us.

Hence you'll find pieces on the old Ashburton Hall – now renewed – and the old decorations and facilities of St Millie's undergoing transformation. With bits on old maps and comments on new buildings and new plans, it's a reflection of the dynamic taking place around us.

You may also notice that some of our old advertisers have left us, and some new organisations have taken their place. Some of the old adverts have been brought up to date, and this will tend to give the magazine something of a new feel.

We have a new Ad Manager in the person of Colin Gamm, currently touting our space around the area. If you, or any of your friends, want to get the message of your business or services out to the surrounding neighbourhood, check out our ridiculously good deals on advertising shown on page 30. *Phil Poole*

## In this issue

- 5 Letters**
- 6 Addiscomment**  
Local talking points
- 12 St Mildred's**  
New 'old' look
- 16 Old maps**  
A century of change (part 1)
- 22 Fly-tipping**  
Is there a funny side to it?
- 24 What's on**  
For Spring and Easter
- 28 Ashburton library**
- 30 And finally...**

*Where's this?*



ROYAL ACADEMY OF  
**DANCE**

REGISTERED TEACHER

**NEW CLASSES AND LOCATIONS  
SEE: [WWW.MKDANCE.CO.UK](http://WWW.MKDANCE.CO.UK)**



**MK DANCE**

where dance is fun

Contact us now for  
Your free trial  
**07841527642**  
**[info@mkdance.co.uk](mailto:info@mkdance.co.uk)**

**RAD BALLET  
TAP AND MODERN  
ADULT BALLET  
(BEGINNERS AND ADVANCED)**

# Letters to the editor

## Tell us what you think

Sir,

We have had a 20mph speed limit for over a year now, begging the simple question: has it made any difference?

The short answer, here in Northampton Road at least, is that it has made no difference whatever.

The pairs of black rubber tubes installed on our roads (with little computery box things on the pavement) at the end of last year measured vehicle type – lorry, car, motorbike etc – and how fast they were going.

Three hundred sets were installed on our roads. We asked the engineer taking them up what would happen next. He told us they would install another 200 sets elsewhere in the borough.

So has the Council achieved its aims? Has traffic been slowed down? No it hasn't. And they've got the data to prove it now.

Fines? Who's there to police it? Has anyone seen any active enforcement? Have a few people been caught and been really told off and branded criminals for the rest of their lives?

Safer? Who can say? We'll have reams of statistics in five years' time but has anyone noticed fewer pets being run over? Does anything even get run over in, say, Whitethorn Gardens? 20mph there is no more than a dream.

It has cost a fortune. All those poles, the 20mph signs, none of them big enough to be seen. The extra 30mph

signs needed to tell us we can speed up when we turn the corner.

We were told in 2016 that "it is likely that not everyone will drive within the 20mph limit from the outset but, over time, compliance will increase".

What nonsense. What a waste of money. Without any "police enforcement of speeds in residential areas" – even on the "ad-hoc basis" we were promised – it's no more than an expensive "me too" knee-jerk from clueless politicians.

**Niggled, Northampton Road**

Sir,

The closure of Barclays at the end of 2017 has forced many of its customers to use the banking services of the Co-Op's Post Office counters, or to make trips into central Croydon to use bank branches there.

Given the queues in the Co-Op in December, and how busy they can get after weekends, it can't be much fun if you're a business wanting to bank takings, or you're making small transactions.

With Spring on the horizon, we'd just like to ask that our members might consider the issues of the Road Reps might have getting the dribs and drabs of cash and cheques banked locally, when we come to start collecting subscriptions in May and June.

So perhaps you'd all like to give a little thought to setting up standing orders for your ASPRA sub (if you haven't already done so).

Many thanks.

**Dave Lee,**  
**Membership Secretary ASPRA**

## Addiscomment

### Light relief

On a cold clear January morning, while the Christmas decorations were still up, a walk along the Lower Addiscombe Road could be quite rewarding. Looking up, with the icy blue of the winter sky as a backdrop, the blue and the white of our festive lights was quite effective. With everything looking quite cheerful in the cold sunshine, the high street looked active, busy and prosperous. Such a pity, then, that we still have so many empty shops and that busy-ness is dependent some of the time on the charity outlets.

Once again, it's worth remembering that the lights we all enjoy are only up there through the efforts of the ASPRA team. Croydon Council obviously allow us to decorate, and assist in the installation, but they contribute nothing directly to costs involved. We rely on the generosity of sponsors for financial support and, this year, have to particularly thank Harris & Bailey, the

Claret & Ale, St Mildred's, Addiscombe Dry Cleaners and Finch Hardware & DIY.

### Jam tomorrow

It was nice to see a recent edition of London's Evening Standard giving a big plug to Croydon as the city's 'fifth most affordable borough'.

The Standard's article makes a big play of the Westfield development, bringing 7,000 new jobs and 1,000 new homes, with construction starting 'next year'. Some older Croydon watchers might remember that 'this year' was the originally advertised completion date. Probably best not to mention that now.

The same piece also mentions the Mayor's Office giving permission for a 794 apartment tower to go up in central Croydon. When it's finished, in the 2020s, it'll be the second tallest building in the UK, apparently, with the 'highest bar and restaurant in London'.

Excitingly prestigious or an all-pervading eyesore? You're paying your money - you decide!

### Fizzing up the Fairfield

It's also being reported that Croydon is launching a bid to become London's 'borough of culture' in 2019. Central to that, we suppose, is the overhaul of the Fairfield Halls and the newly planned art and entertainment centre. Given the misfortunes and ill-luck other major projects have experienced, we wonder if it will all be ready in time?



It's reported as already being six months behind schedule, with nothing apparently booked for the crucial Christmas season this year. That'll mean our third December-January period with no pantomime offer. Still, with the Arnhem Gallery being demolished, it's at least ahead of Westfield!

## Addiscombe's 'conventional' past

Croydon has to be congratulated for resurrecting one of the borough's quirkiest old buildings and reviving it for the future.

The old Ashburton Library building has an interesting history. Who knew that it was actually built as a convent, in or around 1878? At that time it adjoined the original Stroud Green House, itself dating from as far back as 1788. The house itself fell into disrepair and had to be demolished sometime in the late 1920s but the convent and an adjoining cloister survived. Now in the possession of Croydon Council, the old convent itself eventually became the Ashburton Library.

The main adult library was based in the convent's chapel, which was complete with its own pulpit and gallery. The junior library was to be found in the former dormitory. It had a bell underneath a weathercock but, during an attempted theft, the bell ultimately fell down

through the ceiling and the hole it made could be still be seen by users of the library for some years afterward.

In recent years the The belfry was eventually stripped of its lead and the weathercock stolen. Fortunately the bell was taken in to the safe keeping of the Council, where it hopefully remains.



In 2007 the library was moved out of the building across the Lower Addiscombe Road and round the corner to the newly built Oasis Academy on Shirley Road.

Now the old 'hall' has apparently re-opened. There is a smart looking new annex and a sign on the railings of the old building tells us that it's all now properly renamed 'Ashburton Hall' and is advertised as Croydon's 'newest Community Arts Hub' and is, we're advised 'open for bookings'. We wish it well.

## Fernhurst fiasco

Our sympathies are extended to our friends in Fernhurst Road, affected by the expanding ambitions of Penge Foods. Initially moving into the high street in the premises once used by the plumbers' supply business, Penge Foods have now annexed the old Blockbusters shop and intend using the whole site.

Croydon Council have refused planning permission but Penge Foods have appealed to the Government Inspector and the objection has been overturned.

A quick look at the site area behind the shops indicates a fair-sized

area awaiting a lot of work. So a lot of noise and disruption for Fernhursters near the shops. However, while Croydon's objections have been over-ruled, local building regulations still apply; including those governing weekend working. ASPRA's experts tell us that Saturday work should not continue beyond noon, and Sundays should be work free.

Residents seeking advice should ring the Council on 8726 6000.

### Carillion cry off

There's been a lot of national publicity given over to the failure of Carillion being able to offer tendered service to the public and local government sector.

Our local councillors tell us that services given out to Carillion are coming back into Croydon's management, and among these is the library service at Ashburton school.

The hope for the library is for more services not less, and a return to the ethic of

free knowledge and information.

### Where's this, last issue

The answer to our picture quiz: it's an original oak post, circa 1911, in Addiscombe Rec where the railings by the path from Bingham Road meet the railings behind St Mildred's Court.

### Goodbye Keith

Long time advertiser, Keith Neiles, has retired from the stained glass business. Good luck!

## GUTTER CLEARING GARDEN MAINTENANCE

Blocked gutters can cause serious water damage to your home. We clean your gutters from the safety of the ground.

**Please contact CS MAINTENANCE on 0793 128 6849 for a free quote.**

We also do all garden work

- Grass cutting
- Weeding
- Cutting down bushes etc.
- Jet washing driveways and patios

We take all garden waste away

We are insured and registered with the Environment Agency

We are also reliable

You can see my work on my Facebook page:

**CS MAINTENANCE**



The poster features a purple background with a large white speech bubble containing the title 'Fun Spanish for Kids'. Below the title, two cartoon children, a girl and a boy, are holding a colorful, abstract painting. A red speech bubble on the right says 'FREE TASTER for all new customers'. At the top left, there is a logo for 'Children's Activities Association of Greater South West London'. The bottom section of the poster is blue and contains contact information and details about the classes.

Children's Activities Association  
of Greater South West London

# Fun Spanish for Kids

FREE TASTER  
for all new customers

Have fun learning Spanish through songs, games, drama and stories  
From the age of 1 up to 11 years  
Preschooler classes at St Mildred's on Fridays  
10.30am  
Classes also available for nurseries, primary schools, home educators and childminders

For more information, contact Joanna on  
07957 503 945 or  
[joannaj@spanishtastic.co.uk](mailto:joannaj@spanishtastic.co.uk)  
Joanna is fully trained, insured & enhanced  
DBS checked  
[www.kidslingo.co.uk](http://www.kidslingo.co.uk)





### **A bridge too long**

It being now nearly eighteen months since the closure of the north end of Blackhorse Lane, we wonder if ASPRA's residents could be forgiven for wondering if that little pocket of shops and houses has turned into something of a ghost town? If you walked across the bridge you might almost expect to see tumbleweed blowing across the dusty streets up there.

Apparently, and finally, TfL and

Network Rail are now securing the tenders necessary and proper work should be starting 'soon'.

Our local councillors tell us that they are optimistic for the roads to be re-opened in January 2019. By then the closure will have been in place for two-and-a-half years.

### **Peace and poppies**

November will mark the centenary of the end of the First World War and we have been looking at

ways in which we might pay tribute to the sacrifices made. Poppies are a poignant reminder of the losses from the two great wars, so the Projects Team are looking at a suitable and tasteful poppy tribute for the lampposts along the high street.

Like the Festive lights, this will be funded by us the residents and, as with the lights, we will be looking for help and for sponsors.



*Established 1974*

# Addiscombe Dry Cleaners

195 Lower Addiscombe Road, Addiscombe, CR0 6RA  
Telephone 0208 654 2269

---

**We also offer Clothing  
Repairs & Alterations and  
Shoe Repairs all on the premises**

---

*20% Off your next Curtain Cleaning order with this advert.*

**Open Mon. to Sat. 8.30 am – 5.30 pm Wed. 1.00 pm**

# HARRIS & BAILEY LIMITED

comprehensive plumbing, building & timber materials distributor

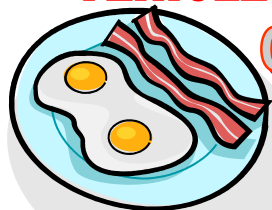
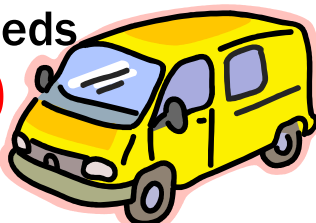
## BUILDERS MERCHANT

Over 100 years of experience as one of industry's biggest independent plumbing, building and timber materials distributor

**Harris & Bailey** offer you more choice, lower prices and invaluable technical advice

Whatever the size of your project **H&B** are well placed and ready to meet your needs

**PARKING FOR OVER 80 VEHICLES AVAILABLE!**



**ON-SITE CAFE OPEN DAILY FROM 7.30am-2.00pm**

**OPENING TIMES**

**Trade Counters: 7.00am - 5.00pm**

**Office: 7.30am - 5.30pm**

**MONDAY TO FRIDAY**

**50 Hastings Road Croydon Surrey CR9 6BR**

**t** 020 8654 3181 **f** 020 8656 9369 **e** mail@harris-bailey.co.uk **w** www.harris-bailey.co.uk

## **Harris & Bailey**

### **Building success in Addiscombe since 1912**

Harris & Bailey are one of Croydon's longest established businesses, and very much part of Addiscombe's history.

Starting out as builders' merchants in 1912, Alfred Harris and George Bailey rented space in the old Addiscombe Station goods yard. This was the 'rail head' for the London and Chatham Railway Company, and it was common back then for builders' merchants to set up where deliveries could be made by freight trains.

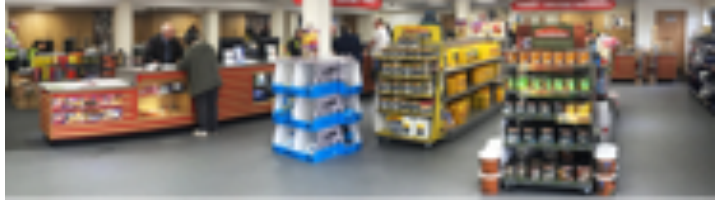
George Bailey left the business in 1913 and the company continued running in the hands of the Harris family until Alfred died in 1935.

Now a limited company, the business was managed through the war years by Norman Peet, an accountant who wanted to get into business management.

Although wartime had been tough for many businesses, the company emerged into the 1950s and 1960s able to take advantage of the new economic climate. An expanding coal sales and delivery business was very much a part of this until the 1970s, when the business then developed into the modern builders' merchants we recognise today.

Part of the development was the eventual acquisition of the their site's freehold from their then landlords, British Rail, and in 1989 the current site and premises came into being.

Anticipating the boom in do-it-yourself and the continuous



redevelopment of building stock, and noting ideas being worked on in Europe and America, the store took on the open-plan look similar to that of national traders. A range of trade counters are supported by expert staff, and a customer car park accommodating up to 80 vehicles, eased the shopping experience for new and old customers alike. Not least among the facilities on offer is the ever-popular on-site cafe, which offers everything from breakfasts to roasts.

Central to Croydon life in every respect, for trade builders, plumbers, decorators and electricians, Harris & Bailey offer the one-stop solution to materials and supply. For the d-i-y enthusiast it's the place to go for whatever you might need and the advice and help you want.

Being part of the Croydon community is important to Harris & Bailey who have been very generous supporters of ASPRA's Christmas lights this year

## New 'old' look for St Millie's

### Facing a brighter future

It's hard to argue the fact that St Mildred's church lies at the centre of our Addiscombe community, both in its physical presence and as a social and community centre for the neighbourhood. So imagine our consternation on learning that the church was closing for six months.

Eager to find out more, we contacted the parish office to learn that a long-awaited redecoration and refurbishment project was underway and, yes, the church itself was closed, but it was otherwise business as usual, with services going on in the large hall.



*Covering everything up, ready for the work to get going*

Matt Webb, the Project Manager for the refurbishment, was happy to explain exactly what was going on.

St Mildred's Parish Church, he told us, was built over a six-year period beginning in 1931. Its appearance has changed gradually over the years; the

pink of the baptistry and turquoise of the ceiling, for example, were introduced in 1957. The church was last redecorated back in the 1980s, after a fire. And when it was last rewired in 1977, just seven electric sockets were made available throughout the whole church.



*Getting underway; work on the new platform in the nave*

Forty years on and not only do new safety standards now apply, but new demands are being made on what is now an old building.

New LED lighting will replace the chandeliers and make the church feel more open while reducing lighting costs. New power sockets are going in, along with new audio and visual equipment. Matt and his team – including many volunteers from the congregation – are getting St Millie's ready for the 21st century.

The way the church building is used has changed dramatically over the years. Today, it is being used for so much more than anyone in the 1930s could ever have anticipated. Back then

churches were used for services, weddings and christenings, more or less. Now they are being used for many forms of worship and events, so to encourage these, the nave platform, previously taken up by the choir, is being extended to create a more flexible worship and performance environment.

Wheelchair ramps will go in to allow better access to the stage and Lady Chapel. New movable (and removable) choir stalls will be angled to improve the acoustics and enhance the experience of concerts for both audiences and performers.

The church was last decorated in 1987, and will be repainted throughout. The turquoise ceiling, now looking a bit tired and showing the structure behind it, will go back to the almost royal-blue look established by the architect Cecil Hare in the 1930s.

The very old illustration on this page, from the book *Anglican Church-Building in London 1915-1945*, shows how it looked back then, when it was rightfully described as ‘a true cathedral of the suburbs’. Compare that to today’s turquoise and consider how it is then that modernity tips its hat to the past.

Matt goes on to tell us that, when all of this is finished, and work to prevent the continual flooding of the boiler room has been completed, the organ will then be due a further refurbishment.



What’s happening now has been over a year in planning and seeking council and church permissions. The current programme will take at least six months to complete and will cost in the region of £750,000. Funding has come from the church, from the congregation, from sponsors and from grants. If it sustains this all-important community asset through another eighty years, it’s money well spent, we think.

# S. J. WHITE SERVICES

(est 1968)

## Your local BUILDER

Extensions  
Conversions  
Loft rooms

Qualified carpenters

Qualified electricians



PLANNING PERMISSION



BUILDING  
REGULATIONS



INTERIOR DESIGN



0208 407 0362

07960 386677

## Local Pharmacies

Here are some of the opening hours of local chemists. They are, however, all closed on Sundays.

### **Addiscombe Pharmacy**

331 Lower Addiscombe Road

Telephone 020 8654 1542

#### **Opening hours**

Mon - Fri 9am - 6pm

Saturday 9am - 1pm

### **Boots**

257 Lower Addiscombe Road

Telephone 020 8654 2128

#### **Opening hours**

Mon - Sat 9am - 5.30pm

### **Larchwood Pharmacy**

215 Lower Addiscombe Road

Telephone 020 8654 1149

#### **Opening hours**

Mon - Fri 9am - 7pm

Saturday 9am - 6pm

### **Shirley Pharmacy**

175 Shirley Road

Telephone 020 8654 1065

#### **Opening hours**

Mon - Fri 9am - 7pm

Saturday 9am - 5pm

### **For longer opening hours (and Sundays):**

### **Sainsbury's Superstore**

Trafalgar Way

Telephone 020 8681 5800

#### **Opening hours**

Mon - Fri 7am - 11pm

Saturday 7am - 10pm

Sunday 11am - 5pm

# The PC Help Company

*Door to Door IT Support (20+ years experience) No Call Out Fee*

Problems with Windows 10? or 8,7, XP, etc...

We support Apple computers, iMac, MacBooks, iPad's, iPhone's...

Printer Problems, Android Tablets, Phones, Software, Networking, Cloud Storage...

M.O.T your PC, If you have a slow PC, problems with updates, Malware, Viruses, Spyware, a slow or problematic web browser (MS Internet Explorer, MS Edge, Safari, Chrome, Firefox...). Pop-up messages, redirection to other sites, etc.

We test your broadband speed and can improve your Wi-Fi coverage.

We can speak to your provider to see if you are on the best deal.

We set-up Smart TV's, streaming boxes, troubleshoot TV issues.

We provide data recovery services for lost or corrupted: Documents, Photo's.

Advise on ways to back-up your data. One to one technology training.



Contact us now on 078 101 087 32  
e: [daryl.seyforth@pchelpcompany.co.uk](mailto:daryl.seyforth@pchelpcompany.co.uk)  
T: 0208 656 3634 (Answer Phone).



**ANTHONY**

**LEONARD**

ASSOCIATES

## WE ARE PROUD TO OFFER A SPECIALIST RESIDENTIAL & COMMERCIAL PROPERTY SERVICE

Our highly experienced team have an extensive knowledge of all legal issues involved in the residential and commercial property markets

### OUR SPECIALIST TEAM PROVIDE-

A professional service

No hidden charges

If you are thinking of moving

**please call us first**

**T 020 8654 7757**

**W [www.anthonyleonard.co.uk](http://www.anthonyleonard.co.uk)**



**THE**  
**SOLICITORS**  
**IN**  
**SHIRLEY**

161 Shirley Road Shirley  
Croydon Surrey CR0 8SS

## Two old maps

### Part one: The Ashburton estate in 1903

Two old maps, just ten years apart. And what a difference those ten years make.

This first map, revised in 1903, shows where we all live today as not much more than fields, several estate houses and a few cottages. The Ashburton estate, pre-railway, covered the land now contained by Ashburton Road, Lower Addiscombe Road, Addiscombe Road and Shirley Road. It was labelled as Addiscombe Farm on early maps, which makes sense. Addiscombe Farm, on Addiscombe Road, dates from 1676 (and is now Grade II

listed). Ashburton House, built to the west (left) of the farm was a grand Georgian house built in the late 1700s by the Whig politician John Dunning.

Ashburton Road, then and now on the left of the railway line (our westernmost border), was developed in the 1860s, after the Vanbrugh-designed Addiscombe Place (later the East India Company's Military Seminary) was demolished. The house was roughly where the corner of Outram Road and Mulberry Lane are today.

The railway line, where the tram runs now, was opened in 1885 but was relatively unsuccessful. It ran to Selsdon station, where it joined the Oxted and East Grinstead Railway, and in the other direction it went to Beckenham and on to London Bridge. Bingham Road Halt, shown on the map as *HALT*, was behind Northampton Road, and not where the tram stop is now between Bingham Road and Lower Addiscombe Road. It was one of the more successful stations on the line,

because of the interchange with Croydon's original trams and bus routes.

Wooden platforms were built in 1906 but the proper brick-built station had to wait until 1935 when the line was electrified. Both road bridges, now demolished, of course, are in place and it is interesting to note that there is only one tunnel going south in 1903.

The *Inn* on Lower Addiscombe Road (or Beckenham Lane as it was previously known) is our old friend the Black Horse,



different versions of which have fuelled thirsty citizens there since the 1600s. We can also see the two road bridges on Blackhorse Lane which are so important to our local community – open then but now



miserably closed as a result of niggardly maintenance and reluctant funding.

Bingham Road, shown on maps since the 1870s, is white, not orange. In *The Story of St Mildred's, Addiscombe* by the Rev Charles Budden (1937), Bingham Road “was but a lane, and in wet weather those who attended church [at that time the small church on the corner of Parkview Road, opened in 1914] were forced to walk on planks to get there dryshod”. Buildings are shown at the north-east end where Our Lady of The Annunciation, the Catholic Parish Church of Addiscombe, is now. They were built as Nonington Hall, a cottage home for 20 girls (and later called Ashburton Domestic Training Schools).

One of the most important labels on the map (the clue is in its size) is *Stroud Green*, roughly where the Cricketers pub is these days on Shirley Road. (Needless to say, it was called Stroud Green Road then.) There was a cluster of buildings there in 1903. Just south of there, on what is now Poppy Lane, is Stroud Green Well and Pumping Station (Croydon Corporation Water Works) where today Thames Water pumps gazillions of gallons from the chalk aquifer. It was built in 1903, and is now locally-listed: strong architecture for what could have been a very plain building.

Shirley House is shown where Trinity School is now. Here's *The History & Antiquities of Croydon*, published in 1818: Shirley House is “*the seat of John Maberly, Esq. member of Parliament for Rye. It is situated on the skirts of the heath, and was built by John Claxton, Esq. in 1720. It was sold by his grandson John Claxton, Esq. to the present proprietor, who has turned the Wickham road more to the North of the house, enlarged the canal, planted a great part of the barren heath with forest trees which appear to be in a thriving state, and has made other considerably and ornamental improvements.*”

Shirley House, at one time the home of the 3rd Lord Eldon, became Shirley Park

Hotel (used as a convalescent home for airmen during the First World War) and was bought by the Whitgift Foundation in 1959. Today it is the site of Trinity School, which moved there in 1965 from a glorious gothic building that stood where the Whitgift Centre stands today.

Where Addiscombe Road meets the railway, we can see Ashburton House and Addiscombe Farm. Ashburton House, also known as Ashburton Court, was between where Northampton Road and Cheyne Walk are today and Addiscombe Farm, much bigger then, was bang in the middle of where Cheyne Walk, Annandale Road and Fryston Avenue are now. Ashburton House was demolished in 1910.

We can see a lane running diagonally from just right of the farm through to where Ashburton Avenue meets the Shirley Road today. It has had a number of names: Slutt's Hall Lane, Lady Ashburton's Walk and Love Lane, of which the first is by far the most glamorous. It is widely thought that the big oaks in Addiscombe Rec once bordered the lane, but that's not the case. The lane disappeared under Fryston Avenue/Sefton Road and Selwood Road.

Alas! Slutt's Hall Lane is no more. But we have got Park View Road (nudge, nudge) – but you'll have to wait for that.

Next issue: the year 1913, and the slow beginning of ASPRA-land as we know it. CG



## Your ASPRA committee

### **Chairman**

Steve White  
chairman@theaspra.org.uk

### **Vice-Chairman**

Mary Alexander  
vicechairman@theaspra.org.uk

### **Treasurer**

Frederick Law  
4 Parkview Road  
treasurer@theaspra.org.uk

### **Secretary**

Gill Lee  
38 Northampton Road  
secretary@theaspra.org.uk

### **Editor**

Phil Poole  
editor@theaspra.org.uk

### **Advertisement Manager**

Colin Gamm  
advert@theaspra.org.uk

### **Webmaster**

George Orlebar  
(taking over from Bob Sleeman)  
info@croydon-it.co.uk

### **Email Postmaster**

Dave Lee  
38 Northampton Road  
contact@theaspra.org.uk

### **Projects Consultant**

Hilary Chelminski  
projects@theaspra.org.uk



### **Group Aims**

Promote co-operation between the practice and the patients to the benefit of both

Raise awareness of and improve access to other support agencies

Encourage communication of public health messages

Promote improvements for all patients and the community

If you want to have your say and make your voice heard, or wish to find out more, contact:

***Surgery Reception on  
0208 654 1427***

***www.stovellhousesurgery.co.uk***

***or email  
contact@stovellhouseppg@  
gmail.com***

## Vic Gibson Butchers Ltd

QUALITY BUTCHER & DELICATESSEN



020 8654 5147

07949 425 319

## ADDISCOMBE SECURITY CENTRE

For all your  
Security needs

8 Bingham Corner  
Lower Addiscombe  
Road CR0 7AA

Next to Addiscombe  
Tram Stop

Tel: 020 8655 1677



Email: [addiscombesc@aol.com](mailto:addiscombesc@aol.com)

# Need a band for your next party?

The Big Dog Band is a three-piece band based in Addiscombe. We play pop music from the 60s and 70s. (And the name's a bit of a misnomer. We don't actually bite. Or bark.)



We're not in our first flush of youth. We're adaptable. If you want it loud, we can do loud. If you want it quieter, we understand. We've got great equipment and we know how to use it.

If you are planning an event – a special birthday, an anniversary or maybe just a party – why not give us a ring?

For more information please contact Barry on 07961 014425 or Kiff on 07523 885261.

## DP ROOFING

Specialist in flat roofing  
slating, tiling

All work guaranteed

Free estimates

30 years' experience

**Tel: 020 8656 8708**

Dave Patey  
45 Kingscote Road  
Addiscombe

Croydon-IT Established 2003 Addiscombe

[www.croydon-it.co.uk](http://www.croydon-it.co.uk)

[info@croydon-it.co.uk](mailto:info@croydon-it.co.uk)



**IT Support for Home PCs,  
Small Enterprises and  
the "Not-for-Profit" sector**

- PC Support and training
- Anti-virus products
- Home PC problems
- Transfer to a new PC
- Specialist advice on IT security
- Business continuity planning
- ClearBooks Accounting system

Mobile: 079 8463 0937

Email: [info@croydon-it.co.uk](mailto:info@croydon-it.co.uk)

# Quality care and Companionship in the comfort of your own home



## Our local team of Caregivers provide:

- Companionship
- Meal preparation
- Light housekeeping
- Medication reminders
- Help with washing, dressing and personal care
- Transportation and errands
- Post-operative support
- Holiday and respite cover
- Specialist dementia care
- Managed live in 24hour care as an alternative to a Care Home

To find out how we can help care for you and your family, contact us



Quality Care in Your Home

**0208 656 6921**

[www.rightathomeuk.co.uk/croydon](http://www.rightathomeuk.co.uk/croydon)

Areas covered: Selodon, Purley, Sanderstead, Coulsdon, Shirley, Addiscombe, South Croydon and surrounding areas.



**RATING  
GOOD**

Registered with the Care Quality Commission  
Date: 2015-03-03  
Next review: 2016-03-03



## Chartered Accountants & Registered Auditors



We'll be there every step of the way....

- Accounts preparation
- Self-Assessment
- Corporation Tax
- VAT & PAYE
- Company Secretarial
- Company Formation
- Auditing
- Tax Planning
- Business Plans
- Tax Enquiries
- Book-Keeping
- Start-up Specialists

First 30 minute consultation free of charge with our compliments  
Discounts for local residents, please quote 214AD

**020 8090 2183**

[info@guryel.co.uk](mailto:info@guryel.co.uk)

[www.guryel.co.uk](http://www.guryel.co.uk)

214 Lower Addiscombe Road, Croydon, CR0 7AB



## Come fly-tip with me...

### ...or a rubbish article

Somebody dumped an old commode in the kerb outside our house. Yes, a commode. Dumped. (The perfect verb, is it not.) When did you last even see a commode? It was oldish, looked a bit like what we used to call utility furniture. Varnished light-coloured hardwood, probably beech, probably NHS circa 1955.

It was all there. Shiny brown padded leatherette seat, good hinges, nice clean bowl. But just not quite tempting enough to put away somewhere for what we could euphemistically call a rainy day.

The house opposite is empty so I put it on their drive to see what happened. Looked good, for starters. The sun glinted precociously off the leatherette seat. Nice sense of well-being. It looked quite at home, quite sensible. Next to a nice big tree. Gave it all scale. Nice.

That night someone put an old microwave on the seat. It disappeared the next day, probably rescued by one of those entrepreneurial young men that drive round slowly in old vans, tidying the

neighbourhood up. And as old commodes are so self-evidently mainly made of wood, it stayed where it was.

Somebody asked me to take an old stool and other bits and pieces to the dump for them a few days later. Needless to say, I put the stool with the commode, over the road. They looked good together, friends. I wish I'd taken a photograph.

The stool disappeared the next day, and quite rightly too. It wasn't in bad nick. A quick lick of purple paint and you could sell it on eBay for ooh, at least £7.



Anyway, the commode's still there, a sentry on the drive. Solid, keeping guard on the empty house. Still looks good after several weeks.



Anyone need a commode? It would probably look wonderful with flowers growing out of it in the back garden. You know how people are using old stepladders and things for their plant pots? A bit like that. Except – how can I put this – crappier.

And here we are. Walk around the streets and you see so much fly-tipping. It's everywhere. It's anti-social, unhygienic and could even be plain dangerous, containing syringes, toxic chemicals or other hazardous substances (it says here).

Some of it, like fridges and bedsteads, is put out by householders, hoping those helpful young men in the van will spot it and take it away. But there so much complete rubbish around, piled in untidy, er, piles.

So here's a quiz. If you see a pile of rubbish on the pavement do you:

(a) Make sure no one's looking and

kick it around a bit, because if you don't somebody else will;  
(b) Have a jolly good look at it in case there's something useful there;  
(c) Wait until it's dark and put some of your old stuff on the top;  
(d) Phone Croydon Council on their dedicated fly-tipping hotline: 0208 604 7000. You can even email them at [flytip@croydon.gov.uk](mailto:flytip@croydon.gov.uk).

Croydon's Don't Mess with Croydon campaign is cracking down on fly-tipping and other environmental crimes (enviro-crimes in Council-speak) in the borough. They say on their website that they will deal with it within two days. They have special fly-tip reaction teams to patrol the borough with council enforcement officers, who investigate fly-tips to catch, fine and prosecute offenders. And with our support they can make Croydon one of the cleanest greenest boroughs in London.

Hurrah! For all of us! Cleaner! Greener!

And browner. Anyone want an old commode?

*The correct quiz answer is, of course, (d), however tempting (c) may be.*



# What's on!

There's a lot going on in and around Addiscombe

## Concerts

**Saturday 3 March 10am until 6.00pm**

**Croydon Bach Choir** presents  
*'Come and Sing' Day*  
Learn to perform Handel's *Coronation Anthems*

**St. Matthew's Church,  
Chichester Road, CR0 5NQ**  
Tickets for singers £18.00 or £5.00 for the 5.00pm performance.

**Saturday 24 March 7.30pm**

**Croydon Bach Choir**  
*Spring Concert*  
Dvorak's *Mass in D* and Gounod's *St Cecilia Mass*

**St Mary Magdalene with St  
Martin Church, Canning Road,  
CR0 6QD**

Tickets £12.00 (buy 3 get 4th free)  
available on the door  
www.croydonbachchoir.org or phone  
07507 766565

**Saturday 17 March 7.30pm**

**Ruskin Chorale** presents  
*Songs of Reflection*  
with Tracey Connell (Alto), Anthony Goode on piano and conducted by Adrian Connell.  
**Shirley Methodist Church, Eldon Avenue, Shirley.**

Programme vouchers £7.00/£6.00  
Students free. Contact  
johnruskin2014@hotmail.com

**Croydon Recorded Music Society**

offer their programme for Spring:  
Beginning on **Friday 2 March**  
*A sleeping giant: the music of 20th century Spain*

**Friday 16 March**

*Discovering Carl Nielsen*

**Friday 6 April**

*Music for the Resurrection*

**At St. Mildred's Church,  
Bingham Road, Addiscombe,  
CR0 7EB**

**7.30 - 9.30pm**

email:stellastocker@btinternet.com

## Spring and Easter services

**At St. Mildred's Church,  
Bingham Road, Addiscombe,  
CR0 7EB**

**Sunday 11 March 9.30 and 11.00am.**

Mothering Sunday

**Sunday 25 March 10.00am**

*Palm Sunday*

**Good Friday 30 March**

**10.00am** *All age service*  
**2.00pm** *Service around the cross*

**Sunday 1 April**

*Easter Day*

Two services at **9.30** and **11.00am**



## The great book sale

**Saturday 10 March 10am - 4pm**  
**At Shirley Methodist Church,**  
**Eldon Avenue, Shirley, CR0 8SD**  
**Collecting until 28 February**  
**Wednesday mornings (10am -**  
**noon) at the church or contact**  
**Steven Hunt 020 8777 4700 or**  
**Bob Wakefield 020 8654 3318**

## St Mildred's Literary Society

Meetings are held on **Tuesdays in the St Mildred's Centre** and start at **7.30pm** with tea and biscuits; talk at 8.00pm.

Talks include:

**6 March** *A Walk on the Wild Side,*  
**13 March** *Quiet & Orderly; Care of the Mentally Ill.*

On **20 March** we'll review our season and on **17 April** we'll hold our **Annual General Meeting.**

## Addiscombe festival

**Sunday 27 May in Ashburton Park, CR0 6RX** a **Family Fun** day with the **Croydon Lions** and **John Coneley's Fun fair.**

*Food, arts and crafts and more, with all proceeds to Lion Presidents chosen charity.*

For more information contact [croydon.lions@gmail.com](mailto:croydon.lions@gmail.com) or the bookings secretary on **0208 681 2306**

## ASPRA

Our **Road Reps Meetings** are held at **St. Mildred's Centre, Bingham Road.** All members are welcome to attend, you don't need to be a Road Rep to come along.

**Our next meeting (the AGM) is on Wednesday 25 April** in the Pavilion.

Refreshments from **7.30pm.**

Meetings start at **8.00pm.**

## ASPRA needs your help!

### Road reps

Lower Addiscombe Road (194-362)

### Volunteers

Editorial team

Local issues planning group

Loads of gardeners to help with our planting in Bingham park

We are an enthusiastic and committed committee and will give you all the help and support you need. Without volunteers to fill these roles the Association will not be able to continue.

If a local residents' association is important to you, please think about getting involved.

**Please contact the Secretary for more information**

# Claret & Ale

*Advertisement feature*

## An oasis in Addiscombe

If, as a drinking person, you were sitting on the left-hand-side of a 312 bus turning right out of Cherry Orchard Road into the Lower Addiscombe Road, you could be forgiven for thinking of Addiscombe as a pretty dry area. The only pub you'd obviously notice as you passed would be the Alma, on the corner of Grant Road. Then nothing.

All through Addiscombe and out the other side, past Ashburton park and up along Long Lane to the Elmer's End Tesco and beyond, until finally you'd come upon the welcoming lights of the Elm Tree. Two dry miles!

However, if you'd been sitting on the other side of the bus and hadn't blinked as you passed a row of nondescript shops, you might just have noticed the one of them was emblazoned with the legend 'Claret & Ale'.



Sandwiched between a locksmiths and a Chinese restaurant, you might think the title described a specialist off-licence as your bus rattled past. A slow down and closer look would have revealed a

little more, and a stop and a look in would have hugely rewarded your effort.

For a start, the Claret & Ale is officially CAMRA's 'best pub in Croydon', with a constantly revolving selection of proper real ales, not least of which is their ever popular Palmer's IPA at £3.40 a pint. A beer board on the wall tells thirsty customers what's on, and what's up and coming, plus the very reasonable prices and ABV percentages.



Its new owner, Charlie Read, has put in a new wood panelled floor at the front of the pub, new carpet at the rear and new lighting outside, making the whole place less dingy and more welcoming. So, while the ever friendly blokes still keep a weather-eye on the sports TV at the end of the bar, it's not unusual to see a group of girls enjoying a post-work drink in the evenings.

The Claret has played a big part in Addiscombe's community life for many years now, and is a generous supporter of ASPRA's festive lights project. We hope its new owner and its expanded name see it continuing its well-earned success.

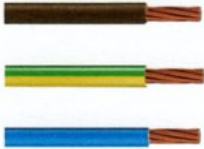
# Arthur's barbers

Cutting hair in Addiscombe for more than 40 years

Monday to Thursday 9am - 6pm ✂ Friday 9am - 7pm  
Saturday 8am - 6pm ✂ Sunday 10am - 4pm

317 Lower Addiscombe Road, Croydon CR0 6RF

It's a snip! ☎ 020 8662 0811  
OAP rates Monday to Thursday



**THE POINT**  
ELECTRICAL SERVICES



**ALL ELECTRICAL AND MAINTENANCE WORK UNDERTAKEN**

**Registered Electrician**

Proud members of  
**Checkatrade.com**  
Where reputation matters

**No job too small!**

- **EXTRA SOCKETS AND LIGHT POINTS**
- **ELECTRICAL INSTALLATION CONDITION REPORT**
- **UPGRADE CONSUMER UNIT**
- **SMOKE DETECTORS**
- **PART AND FULL REWIRING**
- **LANDLORDS' CERTIFICATES**

**For a free quotation please call 07376 146 380  
or email [evpoint@hotmail.co.uk](mailto:evpoint@hotmail.co.uk)**

## What's on at Ashburton library

**Ashburton library** can be found in the Oasis learning centre, Shirley Road, CR9 7AL

### **This spring there are two Monday Talks**

Admission to talks and events is free but booking is essential

**On Monday 26 February, 11am**  
*Conan Doyle: The South Norwood Years*

**Monday 23 April, 11am**  
*Past Caring: The History of Bethlem*

**Chair-based fitness classes** are run every other Friday

On Friday **9 and 20 March, 6 and 20 April and 4 May**

All from **11am – 12 noon**

Please wear loose, comfortable clothing if you're planning to attend.

For something different, try our

**Meditation 'taster' session**

**On Friday 11 May, 11am-12 noon**

And colouring isn't just for kids, when we're offering **Mindfulness**

**Colouring for adults**

**Friday 18 May, 2-3pm**

On **Saturday 17 March**, from **5.30 to 6.30pm** we host an **Author Event** when bestselling author, **Lisa**

**Jackson** reads from her prize winning book -

*'Your Pace or Mine?: What running taught me about life, laughter & coming last'*.

Our **Crime Reading group**, who are really quite friendly, meet once a month when **new members are very welcome**.

All meetings start at 5.30pm

**In term times the library promotes a number of children's activities:**

*Addiscombe Young Writers*, alternate **Saturdays 9.30 to 10.30am**. A friendly, creative writing group for 6–11 year olds.

**Book Buddies**, on **Thursdays at 4.00pm**. Listen to stories and join in with fun crafts for the under 7s.

Please contact **Ashburton library** to receive our monthly email with the latest information about all our events for adults and children.

Telephone **020 3700 1001**

email: [croydon.ashburtonlibrary@carillionservices.co.uk](mailto:croydon.ashburtonlibrary@carillionservices.co.uk)

## **OVEN CLEANING SERVICE**

**Non-caustic • Non-corrosive •  
Non-toxic agents  
All eco-friendly products**

**Repairs to cookers, ovens, washing  
machines, dryers and dishwashers**

**Leave the dirty work to us!**

**Call Monday to Friday (5 - 7pm)  
Saturday (3 - 6pm)**

**Tel: 07960 272493**

## **desresblinds**

Customer service and  
quality guaranteed by  
established local family  
business.

We have a dedicated  
specialist (each of  
whom has worked for  
us for years) for each of  
the products below:



All types of window blinds Conservatory roof blinds  
Shutters  
Awnings/Canopies Curtains Window Film

Call or email us for a brochure or appointment. We  
also invite you to look at our website  
tel/fax 020 8651 3569. Mobile 07961 827 917  
email: [info@desresblinds.co.uk](mailto:info@desresblinds.co.uk) web:  
[www.desresblinds.co.uk](http://www.desresblinds.co.uk)

## And finally...

Do you ever think about trees?

I like trees, but get hard pressed to work out one from another. Now, I know that horse-chestnuts do the conker thing and that willows weep. I know that the recreation ground had three giant oaks until one was over enthusiastically pollarded some years ago. See - I even knew the right word for that. I'm getting good for a cockney lad from Peckham.

Now I'm living in the suburbs and occasionally getting confronted by the mysteries of nature, and now I'm confronted by one such actually on my doorstep.

The picture here was taken in December, when the leaf-fall was fairly complete - save for the branches nearest the lamp-post. My friend Colin and I checked all the similar trees in Northampton Road. We have very little to do some days.

Lo and behold - all the trees near lamp-posts had kept their leaves on the lit side. I am trying desperately to remember school biology - do trees absorb energy from light? Would the lamp-post light count? Has that topped up their chlorophyll counts enabling a longer leaf life? We'd be fascinated to learn from any of you scientists out there if you know what's going on. **PP**



### Advertising in ASPRA magazine

Addiscombe & Shirley Park Residents' Association is always happy to welcome new advertisers to our magazine.

The magazine is published three times a year. Our Spring and Autumn issues go to more than 800 households and businesses. The Summer issue is delivered by hand to every household in our area – over 1800 in all.

#### Our very reasonable advertisement rates for 2018 are:

Full page	£60	Trim size	148mm x 210mm
		Type area	128mm x 185mm
Half page	£35	Vertical	62mm x 185mm
		Horizontal	128mm x 90mm
Quarter page	£20	Vertical	62mm x 90mm
		Horizontal	128mm x 43mm
Bleed page (+4mm on bleed edges)			152mm x 218mm

All measurements give the width first.

For more details on cover rates, acceptable copy formats, series discounts and all the other bits and pieces you need to know, please contact our advertisement manager, Colin Gamm, by email at [advert@theaspra.org.uk](mailto:advert@theaspra.org.uk).

## ASPRA Road Representatives

All our road reps have volunteered to be the first point of contact for our members. They distribute our magazine, the occasional notice and collect the annual subs. There are regular road reps'/members' meetings to share information. We currently have vacancies for parts of Lower Addiscombe Road and Shirley Road. If you fancy volunteering please contact Dave Lee, [contact@theaspra.org.uk](mailto:contact@theaspra.org.uk) or at 38 Northampton Road.

Addiscombe Road (275-395)	Myra Rand	391 Addiscombe Road
Annandale Road	Patricia West	5 Annandale Road
Ashburton Avenue	Kiff Paddon	49 Ashburton Avenue
Ashling Road	Sheila Newbold	3 Baring Road
Ashurst Walk	Shirley Vine	11 Ashurst Walk
Baring Road	Helen Tilbury	27 Baring Road
Bingham Corner	Jenny Crook	29 Bingham Road
Bingham Road East (93-186)	Jenny Tighe	139 Bingham Road
Bingham Road West (1-94)	Jenny Crook	29 Bingham Road
Birch Tree Way	Sheena D'Souza	6 Birch Tree Way
Brockenhurst Road	Sheila Newbold	3 Baring Road
Carlyle Road	Chris Facey	19 Carlyle Road
Cheyne Walk	Jeet Bains	17 Cheyne Walk
Claremont Road	George Orlebar	30 Claremont Road
Colworth Road	Lyn Simmons	3 Colworth Road
Compton Road	Shashi & Shila Kotecha	21 Compton Road
Craigen Avenue	Jane Walsh	39 Craigen Avenue
Craven Road	Joy Morrall	7 Craven Road
Elmgrove Road	Claire & James Binnie	58 Kingscote Road
Fernhurst Road	Terry Eames	23 Fernhurst Road
Fryston Avenue	John Dellaway	34 Fryston Avenue
Glenthorne Avenue	Mike & Crys Rothern	33 Glenthorne Avenue
Greencourt Avenue	Mary Alexander	42 Selwood Road
Greencourt Gardens	Mary Alexander	42 Selwood Road
Harriet Gardens	Bill Callow	3 Harriet Gardens
Kingscote Road	Claire & James Binnie	58 Kingscote Road
Lower Addiscombe Road (194-362)	<b>Volunteer needed</b>	
Northampton Road	Bob Sleeman	50 Northampton Road
Parkview Road (evens)	Sheilagh Clark	53 Bingham Road
Parkview Road (odds)	Rinish Shah	37 Parkview Road
Peabody Close	Lorna Elliott	60 Glenthorne Avenue
Sefton Road	John Aitken	42 Sefton Road
Selwood Road (1-44)	Mary Alexander	42 Selwood Road
Selwood Road (45-87)	Jan Rutter	73 Selwood Road
Sherwood Road	Tom Wells	45 Sherwood Road
Shirley Park Road	Sarah Hills	58 Shirley Park Road
Shirley Road (1-52)	Margaret Grimsley	22 Shirley Road
Shirley Road (57-196)	Claire Brialey	59 Shirley Road
Whitethorn Gardens	Mike Foster	4 Whitethorn Gardens

**Thinking of  
selling your  
home?**

**streets ahead**  
ESTATE AGENTS



## **Problem Solved**

With over 28 years experience  
and 92 staff locally, call the  
experts to help you move.

020 8655 1300  
[www.streetsahead.info](http://www.streetsahead.info)