



1989 - 2018

# Addiscombe & Shirley Park Residents' Association

[www.theaspra.org.uk](http://www.theaspra.org.uk)

Autumn 2018



***Addiscombe remembers 1914-1918***

An independent, non-politically aligned organisation run for and by the residents of Addiscombe

# CRAY & NORTON



## **Selling or Letting your property?**

**Expect More From Your Estate Agent**

**New and unbeatable Prestige Sales and  
Lettings Services now available**

**For all your property needs call 020 8655 0700  
or email [sales@crayandnorton.co.uk](mailto:sales@crayandnorton.co.uk)**

**323 Lower Addiscombe Road, Croydon CR0 6RF**

## From the editor

Welcome to our Autumn issue. This is our seventh since starting to 'act' as editors two years ago. That time has gone very quickly, as go the months between publications.

We've changed things a bit since we started, not least in the number of new advertisers we've been able to 'persuade' into our pages. Not wanting the new adverts to swamp the magazine — we'd like to think you don't want something that's just a brochure of local services — we've tried to produce more written content to keep the proportion of copy to ads roughly what it's always been. That means that this issue is coming out at around 50 pages and we'd like to think there's something in it for everyone, but you must let us know what you think.

We rarely start with a conscious idea for each issue, but it's quite interesting to see how certain things crop up and combine to provide a theme of sorts as we begin to put it all together. It was very obvious for us, this year, to include something to reflect on 1914 - 18, so the past inevitably started to come into our thinking. At the same time we read a letter, in a 1969 copy of *Croydon Town & Around*, that we thought so evocative of times past, we decided to republish it here (see letters).

Then we found Woodside Court farmhouse in the Co-Op car park, where it's been hiding all these years. Who would have guessed?

So memory and reflection then found their way into our content, proving that the present mustn't ignore the past.

And, we aren't ignoring what's happening now. So, you'll find comments on the new bin system (is someone having a laugh?), plus word on the Jumble Trail and progress on the bridge. And lots more besides. Happy reading! PP

## In this issue

**5** Letters

**12** Addiscomment  
Local talking points

**28** The jumble trail

**32** Sad celebration  
Remembering 1918

**34** What's on

**38** Robert Jones  
Our local craftsman

**40** The library page

**42** Planning stuff

**46** The last Wednesday  
in October

**50** And finally...

*Where's this?*





# Assured Preservations Ltd.

WOODWORM · DRY ROT · RISING DAMP

## Damp Proofing Specialists

**W**e have been providing specialist damp proofing and structural waterproofing services throughout London and Surrey for over twenty five years. Many of our customers come to us following recommendations from friends and neighbours, and we strive to provide a high level of customer service.

Most of our treatments come with a guarantee of up to thirty years, free of charge.

All our surveyors are qualified CSRT specialists, and staff members have all been working in the damp proofing industry for many years.



Damp Diagnosis & Treatment



Dry Rot Diagnosis & Treatment



Wet Rot Diagnosis & Treatment



Woodworm Treatment



Waterproofing, Tanking & Rendering

### OUR SERVICES INCLUDE:

- Rising Damp
- Penetrating Damp
- Structural Waterproofing
- Waterproof Tanking
- Cavity Drain Membrane
- Flood Remediation
- Dry Rot Decay
- Wet Rot Decay
- Woodworm Infestation
- Specialist Surveys

*If you have any questions about dampness in your home, or if you would like to book a survey inspection please do not hesitate to give us a call on our Freephone number.*

# 0800 731 8739

For more information see our website [www.assuredpreservations.com](http://www.assuredpreservations.com)  
or email us at [enquiries@assuredpres.co.uk](mailto:enquiries@assuredpres.co.uk)

**Head Office: 153a Shirley Road, Croydon, Surrey CR0 8SS**



## Letters to the editor

### Tell us what you think

We aren't short of letters for the magazine but now and again, something comes our way that wasn't exactly addressed to us but is so nice to read that we feel we should be sharing it with you. This was passed to us by one of our readers and it's from a local magazine (*Croydon Town & Around*) published in 1969:

Sir,

Yes, I remember the stile at the end of Bingham Road; the rag and bone men and their windmills, the Blacksmith on Woodside Green (I went to school with his son); the Ashburton Convent—and orphanage. The orphanage is now removed, but the Chapel and cloisters are now in use as a public library. The grounds were surrounded by a 6ft wooden fence, but on the Woodside Station side was a brick wall and a narrow gate through which the nuns came out to sell vegetables and candles locally.

On the northern side of Bingham Road near the stile and a five-barred gate was a 'tin chapel for the use of orphans in training' at the three houses adjoining. Further down Bingham Road, at Baring Road, was a similar stile and gate. There were no houses in that area and one could walk across the field to the 'Black Horse' or to the south as far as Upper Addiscombe Road, after crossing the brook, now Ashburton Avenue.

Our family moved to Shirley Road in 1909 to be in the country. From the front of the house we could see Beckenham Church and from the back the top of the town hall tower. I have the Abstract of the Title to certain freehold lands of Ashburton Estate, then owned by Louisa Caroline, Lady Ashburton, dating from the time her husband left them to her in 1862. The abstract of the title covers 14 pages. Also a map made at the time showing no houses on the estate except Ashburton Court and cottages connected to the Court. Bingham

Road and Baring Road were the only roads but were not built on then.

The estate was bounded on the south by Lower Addiscombe Road, east side by Shirley Road (then Stroud Green Road), west by Ashburton Road and south by Addiscombe Road.

I have a few other facts about other alterations from here to Shirley Hills, but will not weary you with them.

I should mention that the novelist E.W. Hornung met his wife when visiting Sir Arthur Conan Doyle who lived at 12 Tennison Road, South Norwood.

*W. M. Rumsey  
84 Shirley Road*

*William Rumsey was grandfather to ASPRA secretary Gill Lee; he had a grocer's shop in Holmesdale Road, South Norwood.*

SIR – I thought I would share with ASPRA residents some useful information.

I recently went to the dump to get rid of some unwanted tins of paint and was stopped and told that they do not accept paint as it is now classified as hazardous waste. They gave me an information leaflet – *Hazardous Waste Collection and Disposal Service* – for guidance.

This free service is available to City of London householders (that's us) who pay council tax – and they will want to see proof of payment. Householders are entitled to three collections a rolling year, each of up to 50 litres in total, with a maximum weight limit of 25kg for any one item. While I was at it I gathered my son's and a neighbour's unwanted hazardous products – paint, petrol, white spirit etc – to make the most of this collection (they are all Croydon council tax-paying residents!).

I rang the HWCDS team on 0207 332 3433 to request a form for me to make a list of each type of product needing collection eg:

2 x paint @ 2.5 litres = 5 litres

3 x antifreeze @ 1 litre = 3 litres

1 x petrol @ 5 litres = 5 litres

ROYAL ACADEMY OF  
**DANCE**

REGISTERED TEACHER

**NEW CLASSES AND LOCATIONS**  
**SEE: [WWW.MKDANCE.CO.UK](http://WWW.MKDANCE.CO.UK)**



**MK DANCE**

where dance is fun

**Contact us now for  
Your free trial  
07841527642  
[info@mkdance.co.uk](mailto:info@mkdance.co.uk)**

**RAD BALLET  
TAP AND MODERN  
ADULT BALLET  
(BEGINNERS AND ADVANCED)**

## letters (2)

I consolidated all the paint in the largest tins – poured paint from one tin to another – until I was left with all the paint in full(ish) tins and none at all in the empty tins. I left the empty tins and lids to dry in the sunshine. The council dump accepts dry paint tins.

Having completed the form (it took a



week to arrive) I sent it back with a scanned copy of my council tax invoice together with pictures of each of the four large sturdy cardboard boxes' contents and the four boxes together 'collection ready' – probably an overkill but I wanted to be safe rather than sorry.

I received a phone call a few days later saying the BIFFA waste team would be collecting from 7am the following Wednesday and to leave the boxes on our boundary ready for them. The boxes were taken away and I was given a "Transfer note", listing all the items collected. I have to keep this for three years at the property as proof of proper disposal

Information regarding this incredibly useful service can be found at

[www.cityoflondon.gov.uk](http://www.cityoflondon.gov.uk). Click on Services, choose Waste and Recycling from the right hand side list, then Residential. Next, choose Hazardous Waste Collection where (scroll down the page) you will find information and a link to arrange a Chemical collection. Now you complete the online form or phone the number (020 7332 3433) given to request the form.  
*Ailsa Paddon*  
*Ashburton Avenue*

*(Thanks, Ailsa. That's really useful. Do any other readers have similar tips? Ed)*

Mindful that some of us only have small amounts of paint to get rid of, our rubbish correspondent, Willy Binnes, found this on the B&Q website:

*If your paint is very old and unsuitable for re-use, or you are not able to find someone locally who can use it, you will need to make sure your paint is hardened before you dispose of it. Please remember that paint cannot be placed in your household waste bin and must not be poured down the drain where it can cause damage and blockages.*

*If you have a small amount of paint left, brush it on to scrap paper or cardboard and leave it to dry. Once dry, the paper or card can be placed in your household bin. If there is a larger amount of paint in the can (more than a few centimetres deep), add some dry soil, sand or sawdust to the can and leave to harden.*

Sir,

As a resident of Bingham Road I've become increasingly concerned for my safety of late even after the 20mph limit has been put in place. Traffic incidents seems to be on the rise while the standard of courteous driving is plummeting. Recently I've seen the effects of an ambulance crashing into a wall, two dead pets on the road, an overturned car, parked cars being scraped, aggressive driving with ridiculous horn use and in the evenings a makeshift race track.

# QUALITY KITCHEN FACELIFTS

From a simple door swap to  
a full replacement kitchen

EST.  
1999



Before



*Why replace when  
you can reface?*

- Trusted reputation
- Made to measure, custom-built doors & units
- Large choice of doors, worktops, and accessories
- UK's leading kitchen facelift expert
- Local family run business

**DREAM DOORS®**  
NEW LIFE FOR OLD KITCHENS

**Checkatrade.com**  
Where reputation matters

CALL ROY FOR A  
FREE ESTIMATE:

**020 8656 7987**

**dreamdoors.co.uk**

Visit our showroom:  
159 Shirley Road, Shirley,  
Croydon CR0 8SS



## letters (3)

All of these could have been avoided if the speed limit was adhered to, but having spoken to the police about this and getting a frankly pathetic reply of "Maybe they haven't seen the signs". I propose that either there's some proper speed calming measures put in place (like Clyde or Leslie Park Roads) or some sort of no through road scheme akin to Walthamstow's Little Holland which is already benefiting from cleaner air and a better community spirit. The ambulances can easily be rerouted to the main roads which are designed for that size of vehicle travelling at speed and it'll be quicker than surprise parking in a resident's front garden.

As I write this there's a car with its bumper destroyed outside St Mildred's Church. The situation as it stands is unacceptable and dangerous to residents, park users and churchgoers alike. I really hope something can be done to solve this issue before it's not just dead pets and the ambulances have a real need to use the road.

Mark Dyne  
Bingham Road

Sir,  
Addiscombe & Shirley Rotary would like to thank all those who have supported and encouraged our fundraising activities for this year.

We were recently at Millers Pond, where our books sale raised more than £100 for charity.

This year we have been able to support a wide range of local, national and international charities with the help of kind donations from the people of Addiscombe and Shirley.

Our annual Christmas collection starts on 3 December. Please look out for Santa and his sleigh in your streets over the following two weeks. We do hope that you will all be able to donate as generously as you have in previous years.

Chris Rutter  
Addiscombe & Shirley Rotary

Sir,

The recipe for a White Lady cocktail in your Summer issue was inspiring. So much so, in fact, that I am equally inspired to share another delicious 'recipe' with you.

We all know about the joys of dunking ginger nut biscuits in tea or coffee. As Judi Dench describes it in *The Best Exotic Marigold Hotel*: "[It] means lowering the biscuit into the tea and...trying to calculate the exact moment before the biscuit dissolves, when you whip it up into your mouth and enjoy the blissful union of biscuit and tea combined."

And it tastes great.

So, if anybody out there enjoys the occasional glass of whisky, they might like to try dunking ginger nuts into that too! It takes the same amount of time and judgement, but you end up with a completely different and delicious result.

It actually makes sense from a gourmet point of view as well. A 'whisky mac' (whisky and ginger wine) has long been a favourite autumn and winter drink, and sailors swear by ginger wine to prevent sea-sickness.

Ginger nuts dunked in ginger wine, anybody? You won't get seasick!

Keith Collins  
Northampton Road



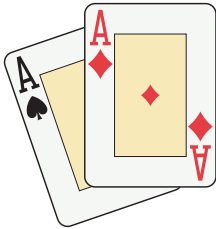
# SOUNDS FAMILIAR

**SOUNDS FAMILIAR** is a 3-piece band based in Addiscombe, playing covers from the 60s and 70s. Featuring great songs from artists like The Beatles, Beach Boys and Byrds; through The Hollies, Monkees and Rolling Stones; right up to Wizzard.

**SOUNDS FAMILIAR** is available for ALL private parties, celebrations and charitable events.

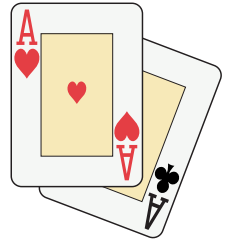
For more info, and to discuss your requirements, please contact Barry on 07961 014425, Kiff on 07523 885261 or Lynn on 07739 638749

**SOUNDS FAMILIAR** is especially happy to play for any charitable event and old peoples' homes. If your church or organisation wants to run an event to raise money for a good cause, get in touch - our rates are very reasonable and for the right event we will play for expenses only!



## ACES

**ARNOLD CONSTRUCTION  
ELECTRICAL SERVICES**  
39 Blackhorse Lane, Addiscombe  
Croydon, Surrey CR0 6RT



### ALL ASPECTS OF ELECTRICAL WORK UNDERTAKEN

- INDUSTRIAL, COMMERCIAL & DOMESTIC • IMMERSION HEATERS • HOUSE REWIRING
- EXTENSIONS/KITCHENS/SHOWERS • DOOR ENTRY SYSTEMS • FAULT FINDING/TESTING
- SECURITY LIGHTING • FIRE & SMOKE ALARM SYSTEMS • DATA & COMMUNICATION WIRING

**24 HR CALL OUT SERVICE (NO CALL OUT CHARGE)**

**Tel: 020 8654 5863 • Mob: 07957 667 125**



[www.arnoldconstructionelectricalservices.co.uk](http://www.arnoldconstructionelectricalservices.co.uk)  
[www.arnoldconstructionelectricalservices.com](http://www.arnoldconstructionelectricalservices.com)

## Bonfire of the inanities

It's the one poem we all remember so well from our schooldays. How could anyone possibly forget such a poignant, heartfelt rhyme:

*Remember, remember, the fifth of  
November  
The Gunpowder Treason and plot;  
They took some honey and plenty of  
money  
Should old acquaintance be forgot.*

(Or something very like it, anyway.)

Anyway, here we are again. Bonfire night, 5 November, is on a Monday this year. Which means that it will start in earnest on Friday 2 November and drag on until the weekend after. So keep those darling little animals safely indoors, folks. We wouldn't want a single hair on the lovely little head of any one of them to come to harm however much they bark all day while your neighbour is at work and it's irritating the hell out of you.

Our self-appointed pet expert – pexpert for short – suggests that stuffing their ears with Vaseline-slathered cotton wool could possibly help, but it might be difficult to get out afterwards, so on balance it's probably just as well not to try it.

**Artist's impression  
of Guy Fawkes  
keeping Knivesan,  
his pet dog, indoors**



# Aurum

Craftsmen in precious metals  
and gemstones

Bespoke jewellery made on the  
premises by our expert craftsmen

Alterations and repairs

Quality gifts

We buy unwanted jewellery  
regardless of condition

*Please call in to discuss your requirements*

## Aurum

290 Lower Addiscombe Road  
Croydon CR0 7AE

Tel: 020 8656 5095

### OPENING HOURS

9:30 am - 5:00 pm

*Closed all day Wednesday and Sunday*

Enquiries: [aurumcroydon@gmail.com](mailto:aurumcroydon@gmail.com)

[www.aurumcroydon.com](http://www.aurumcroydon.com)



## Addiscomment

### Busy, busy, busy

What a busy time ahead of us. There's Beaujolais Nouveau Day (Thursday 15 November), Thanksgiving Day a week later, British Summer Time ends (the clocks go back this year), then there's Hallowe'en, with (we insist) an apostrophe, All Saints (good tune, *Never Ever*; nice harmonies), the mildly oxymoronic Old Cocks' Race, Bonfire Night, Remembrance Sunday (100th anniversary), St Andrew's Day (he invented the saltire), Advent, Winter solstice, Yule, shortest day/longest night, Christmas, New Year, Groundhog Day (2 Feb, again), Valentine's Day, Ash Wednesday, when people give up smoking – blimey, I'm worn out just typing it out.

Then there's Diwali, the Hindu Festival of Lights, from Tuesday 6 November until Saturday 10 November and the Sikh Day of Liberation holiday, Bandi Chhorh Divas (but also known as Diwali), on 7 November.

There can be no better time to be a firework manufacturer. Altogether now: *Light up the sky with Standard Fireworks...* It's great being old.

Toffee apples, anyone?

### Phew, what a scorcher

What a wonderful summer we all enjoyed.

It's quickly fading into memory now as Autumn

leaves gather and the days shorten. But wasn't it nice to spend time out of doors, enjoying the sunshine and eating and drinking *al fresco*?

Most of us are pretty good at clearing up after ourselves and taking our litter home with us. Some of us, unfortunately aren't! It was really depressing to see the rubbish collecting in heaps along the streets closest to the high street. Clearly identifiable snack-boxes, coffee cups, takeaway containers and popper tubes just dumped where their user had last been standing, on the basis of 'someone'll pick it up, won't they?' we suppose.



Except that doesn't seem to be happening any more. The rubbish we snapped in Ashling Road had been there for about four weeks when we took the photo. And all of the roads off the high street, facing KFC, Greggs and the pizza parlours seem the same. Veolia certainly don't seem to be street cleaning as frequently or thoroughly as they used to. Your councillors have been

alerted and say that they are 'looking into it'.

Is there something about hot weather that encourages couldn't-care-less attitudes, we wonder? It must go along with more aggressive driving, louder car sound-systems and people shouting in the street after midnight.

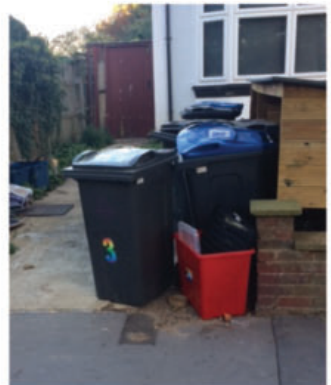
### We bin burdened

Most sensible people appreciate the need for recycling on our poor polluted planet, and most of us do our bit sorting our rubbish for the appropriate collections.

But what have Croydon done to us now?!

Out go the battered green and blue boxes (admittedly past their sell-by dates), but in come our new plastic leviathans, looking like something out of an early Doctor Who series and filling up front-gardens like sentinels of scrap.

The old boxes could be tucked away in corners or in side alleyways, but the new bins are often too



bulky for that. In the streets of terraced houses with small front gardens (poor old Ashling again!), the three or four minimum new bins have taken over. But, where houses are split into flats, there's sometime six or nine of the beasts gathered like a small army just off or on the pavements.

Maybe your editorial team missed it, but we don't recall any consultation being made before this new bin policy was enacted upon us?

### Seeking south east London

Did you know that SE25 is London's most southern facing post-code. And that makes the *Joiner's Arms* the most southern placed pub in the London postal area, with Elmers Road as the last southerly outpost of the official SE London.

Your intrepid editorial team thought we'd seek out these important landmarks and make a journey into London proper by crossing that most formidable of obstacles — the bridge at Blackhorse Lane.

Not much to report here, unfortunately. On the Friday afternoon we attempted the crossing there was just one workman in sight, and a couple of locals told us that work was very slow. Apparently there were loads of service cables and pipe ways laid across the bridge and they all have to be identified and re-cabled

and relaid. It's all taking a very long time.

"Will it all be done by the end of the year?" we asked the workman.

"Which year is that?" came back the enigmatic reply.

### An appearance of poppies

On a wet and windy Saturday morning in September, a small group of ASPRA volunteers braved



the elements to organise our local remembrance display.

With 50 giant poppies, supplied by the Royal British Legion, they went out into the rain-swept streets of our village and decorated our 25 lampposts with the traditional autumn reminder of sacrifice and loss in war. More poignant this year as we remember that it's 100 years since the end of World War I.

Like the Christmas decorations that will shortly follow them, the poppies were initiated and organised by ASPRA. Funding came from the ward budget of our 'lost' councillor, Stephen Mann

and the money goes directly to the Royal British Legion and supports their poppy appeal. The sense of remembrance will be further supported, ahead of Armistice Sunday, by the appearance of a 'silent soldier' (also supplied by the British Legion) by the notice board at the corner of Blackhorse Lane.

ASPRA projects like the poppies and the lights are very much led by the Residents' Association and we have to thank the energy and enthusiasm of Dave and Gill Lee and our Projects Manager, Hilary Chelminski, for seeing all of these things through from ideas to implementation.

Volunteers on the day included Chris Adams and Barbara Bates, Nicola Corbishley and Jonas Craddock. Thanks here are due too to our councillors Maddie Henson and Jeet Bains for their support and their assistance. Maddie and Jeet are in opposition politically so it's nice to see them working together for the common interest in Addiscombe East.

### Marvellous Millie's

In our Spring issue we reported on the start of the long awaited redecoration and refurbishment project being undertaken at St Mildred's church.

A hugely ambitious programme began in January to encompass total repainting, rewiring and updating of sound and



**"BUILDING YOUR DREAMS INTO REALITY"**

- **EXTENSIONS • REFURBISHMENTS • NEW BUILDS**
- **LOFT CONVERSION SPECIALISTS •**

A family-run business with over 25 years' experience in the industry. Our fully qualified staff and office team are dedicated to providing you with an experience that leaves you with the house of your dreams.

### **OUR GUARANTEE:**

- **DEPOSIT PROTECTION •**
- **10 YEAR INSURANCE-BACKED GUARANTEE •**
- **FULLY INSURED & PROJECT MANAGED •**
- **FULLY STAFFED OFFICE MONDAY-FRIDAY •**
- **90% OF WORK IS RECOMMENDED •**
- **THE PRICE WE QUOTE IS THE PRICE YOU PAY! •**



GET IN TOUCH : 020 8406 9907 | 08000 730 155  
ENQUIRIES@LMBGROUP.CO | WWW.LMBGROUP.CO  
LMB GROUP LTD, 167 SHIRLEY ROAD, CROYDON, CR0 8SS



**VELUX®**



lighting systems, last looked at in the 1970s and 80s.

We were delighted, then, to be invited into the church, just ahead of the official re-opening in September, and to see the finished work and to talk to the justifiably proud and pleased project team.

The undoubted visual star of the new look is the ceiling. Transformed from the translucent 'bathroom blue' we'd all come to know, with the old supports showing through, the ceiling is now a deep and warm azure, successfully recreating its apparent original creation from the 1930s. It is augmented by fresh, cream walls and a real sense of renewal throughout. New stage, loudspeakers and lighting, and even a cinema screen facility have given us a marvellous 'modern Millie'.

### A lot on in the allotments

Penny Perry from the Glenthorne Allotments (AWSLG Ltd) tells us that they held their most

successful annual Show to date on Sunday 9 September. She adds that, besides a wonderful competitive display of plot holders' produce including classes for the heaviest marrow and the longest runner bean, the AWSLG laid on a BBQ and a variety of stalls. They included offers of books and bric-à-brac, and there were attractions such as apple-pressing, face painting and Morris Dancing. Tea and home-made cake were served in Ashburton Hall during the afternoon, and many visitors enjoyed wandering round their wild life meadow, full of flowers, bees and butterflies. You can visit their website on [awslg.org.uk](http://awslg.org.uk) for more information about the allotments and the AWSLG Trading Hut, which is open at weekends for supplies of compost, fertilisers and many other horticultural products at competitive prices, including vegetable plants in season.

### It's coming home ... Crack crocks craic back!

Last year major roadworks on Brixton Hill meant the Old Crocks' Race (aka the London to Brighton Veteran Car Run) was diverted from the usual run down the A23, and away from Croydon.

This year, and as a consequence of increasing Sunday morning congestion and ever-spiralling spectator traffic, the



A 1904 Alldays and Onions (honest). Crock'n'roll

organisers are now providing plucky participants (and spectators) with two routes between Westminster and Croydon.



On Sunday 4 November half the cars will follow the traditional route down the A23 and through Thornton Heath. The other half will go via Vauxhall and Tooting and over Mitcham Common. The two join up at the Lombard roundabout before heading down Mitcham Road/Roman Way/Old Town, under the flyover and into Southbridge Place. They come out on the Brighton Road opposite Aberdeen Road.

The run starts in Hyde Park. The first car will leave

Established 1974

# Addiscombe Dry Cleaners

195 Lower Addiscombe Road, Addiscombe, CR0 6RA  
Telephone 0208 654 2269

---

We also offer Clothing  
Repairs & Alterations and  
Shoe Repairs all on the premises

---

20% Off your next Curtain Cleaning order with this advert.

Open Mon. to Sat. 8.30 am – 5.30 pm Wed. 1.00 pm

## GUTTER CLEARING GARDEN MAINTENANCE

Blocked gutters can cause serious water damage to your home. We clean your gutters from the safety of the ground

**Please contact CS MAINTENANCE on 07931 286849 for a free quote**

We also do all garden work

- Grass cutting
- Weeding
- Cutting down bushes etc
- Jet washing driveways and patios

We take all garden waste away.

We are insured and registered with the Environment Agency.

We are also reliable.

You can see my work on my Facebook page: **CS MAINTENANCE**



**Fun Spanish for Kids**

FREE TASTER for all new customers.

Have fun learning Spanish through songs, games, drama and stories  
From the age of 1 up to 11 years  
Preschooler classes at St Mildred's on Fridays 10.30am  
Classes also available for nurseries, primary schools, home educators and childminders

For more information, contact Joanna on 07957 503 945 or [joanna@spanishtastic.co.uk](mailto:joanna@spanishtastic.co.uk)  
Joanna is fully trained, insured & enhanced DBS checked  
[www.kidslingo.co.uk](http://www.kidslingo.co.uk)

**Kidslingo**



at sunrise (6.59am) and should reach Croydon by 8.00 or 8.15am. The last car will be leaving from between 8.00 and 8.30am, passing through Croydon about 10.30 or 11.00am.

The 2018 run marks the 122nd anniversary of the original Emancipation Run of 1896 which celebrated the passing into law of the – deep breath – Locomotives on the Highway Act, which raised the speed limit for ‘light automobiles’ from 4mph to 14mph and abolishing the need for a man to walk in front of all vehicles waving a red flag. (Breathe out now.)

1896. Just a few years before building work began on Colworth Road... CG

### **Woodside Court ... in the Co-op carpark!**

There’s an interesting internet website called *Edith’s Streets* that conducts walking tours round different areas, commenting on points of interest along the way.

Here’s an extract that starts with what used to be Ashburton library.

*After walking around the library, follow the straight tree-lined avenue southwards to the main road, Lower Addiscombe Road, opposite Shirley Road, formerly Stroud Green Road, beyond which on the left side the racecourse was situated.*

*Turn right and follow the road as far as the Black Horse public house. A public house has stood here since at least the seventeenth century. Here turn right into Blackhorse Lane where on the left side is Woodside Court Road, commemorating Woodside Court, a late nineteenth century farmhouse which can still be seen on the far side of the Co-op car park.*

This is the building that the police used to use but have now moved out of – the signs have gone. It certainly looks as if it was built around the mid/late 1800s, but doesn’t much look like a farmhouse.

Does anyone out there know anything more about this nicely detailed old building? CG

### **Editors allowed out**

Being the self-effacing wallflowers that we are, your editorial team doesn’t get invited to much. So, after an approach from the Shirley-based ProBus group for a bit of publicity in this magazine, we said we would like to find out a little more about them before we wrote them up.

‘Come to lunch,’ they said, and we stirred ourselves, blinking into the noon sunshine.



ProBus is essentially a social organisation, originally born out of retiring Rotary members anxious to retain

contacts and further friendships among businessmen and professionals now in retirement, or partly retired. The Shirley and District ProBus Club is essentially male, but a women’s group also exists nearby, meeting in south Croydon.

While the focus of ProBus gatherings is informal and based around conversation and catching-up, regular raffles and the like facilitate small donations to charities throughout the year. There’s also an active holiday group and links to walking and interest groups.

The Shirley and District ProBus Club meet on the fourth Wednesday of most months for lunch at the Shirley Park Golf Club. The club is always seeking new members and ensure guests of a warm welcome. Anyone interested is invited to contact their secretary Barry Copeman on **8777-2889**, e-mail [barry.probus@gmail.com](mailto:barry.probus@gmail.com).



# Quality care and Companionship in the comfort of your own home



## Our local team of Caregivers provide:

- Companionship
- Meal preparation
- Light housekeeping
- Medication reminders
- Help with washing, dressing and personal care
- Transportation and errands
- Post-operative support
- Holiday and respite cover
- Specialist dementia care
- Managed live in 24hour care as an alternative to a Care Home

To find out how we can help care for you and your family, contact us



**0208 656 6921**  
[www.rightathomeuk.co.uk/croydon](http://www.rightathomeuk.co.uk/croydon)



Areas covered: Selsdon, Purley, Sanderstead, Coulsdon, Shirley, Addiscombe, South Croydon and surrounding areas.

Registered with the Care Quality Commission. Each Right at Home office is independently owned and operated.



## Chartered Accountants & Registered Auditors



We'll be there every step of the way....

- Accounts preparation
- Self-Assessment
- Corporation Tax
- VAT & PAYE
- Company Secretarial
- Company Formation
- Auditing
- Tax Planning
- Business Plans
- Tax Enquiries
- Book-Keeping
- Start-up Specialists

First 30 minute consultation free of charge with our compliments  
Discounts for local residents, please quote 214AD

**020 8090 2183**

[info@guryel.co.uk](mailto:info@guryel.co.uk)

[www.guryel.co.uk](http://www.guryel.co.uk)

214 Lower Addiscombe Road, Croydon, CR0 7AB

## Festive fun

When the poppies come down in November, it'll be time to get the festive fun underway and to put the Christmas lights up the



lampposts, ready for the season of goodwill, just around the corner.

This year's display will feature the *Holly and Berries* we've had before, alternating with the new green and white *Star Lines*.

Let's not forget that, while we get some contributions from some of the local businesses, this is an ASPRA funded effort, initiated by our own Projects Team, and 'well done' them!

## Addiscombobulations

**Leslie's Fruiterers** has been closed now since early May. Perhaps Addiscombe's biggest Arsenal fan Paul Haddock has called it a day, and the shop is greatly missed, being part of the

Fish'n'chip/Baker/Butcher/Greengrocer cluster (no candlestick maker) at the heart of the village.

It's a great shame. We know of happy smiling people (thank you REM) ready to take over the shop, but getting hold of the lease remains a problem.

Remember **Blockbuster** on the corner of Fernhurst Road? Remember VHS videos? Remember renting VHS tapes? *Sooo* 1980s. Don't know what we're talking about? So millennial-plus.

Anyway, it's now a **Domino's**, complete with a hint of indoor seating and a herd of small motorbikes outside. And yes, it's just a



few doors along from No274, our go-to (never thought I'd type that) pizza place. Woodlands Pizza have a big menu, but the best is the free choice of cheese and tomato with any four toppings you fancy. Tuna, onion, anchovy and olive please. De-lish!

**Dinotopia**, the children's play place on the other side of Fernhurst

Road where Spectrum used to be, seems to have closed. It's quite a big site, so it may take a while to do a phoenix. It's always a shame when a venue like this closes, as it almost always means somebody has lost out financially, often in quite a big way.

Meanwhile, the refurb of the old bathroom and plumbing shop, so much a part of Addiscombe for as long as we can remember, is making slow progress. **Penge Food Centre** – 'The Mediterranean Choice' – finally has a rear wall. Honest. It has also whitewashed the windows really thoroughly so it's bit tricky trying to keep an eye on progress.

The old **Barclays Bank** still has agents' boards up outside. Getting in touch with either of them was such a pain I gave up. Back in May (*Our landmark trust* article) the cost of rent and rates was £425.80 a week – a lot to cough up given there is a strongroom on the ground floor and a huge safe in the basement, neither of which will be much use to a florist, say.

And talking of florists, **Sullivan's** (269 Lo-Add) have a new signboard up, with new lights to come. Sharon Sullivan loves leopardskin, so what could be more natural than leopardskin lettering...





# ALBION

W I N D O W S

*Craftsmanship with Care from an established family business*



## Create Your Ideal Home

*Be inspired with Albion Windows*

*Whether you want to come and view our products in our showroom or would like a quote over the phone or online we can help.  
Just get in touch today!*

### Head Office

295 Lower Addiscombe Road,  
Addiscombe, Croydon,  
Surrey, CR0 6RE

For installation enquiries

**Call: 0208 655 0066**

### Hayes Showroom

25 Station Approach  
Hayes  
BR2 7EQ

For all general enquiries

**Call: 0208 462 2201**

For all sales enquiries

**Call: 0208 462 2201**

**Email: [info@albionwindows.co.uk](mailto:info@albionwindows.co.uk)**

**Visit: [www.albionwindows.co.uk](http://www.albionwindows.co.uk)**



The old **Abbey National/Santander** premises and now **Bingham Corner** (which was with Streets Ahead) are “being actively marketed” by Gildersleve & Payne. Both properties “have received interest” but it doesn’t take a lot of reading between the lines to realise it’s not easy.

Gildersleve & Payne were responsible for letting the double-fronted premises that will soon be opening as a Turkish supermarket – more details below.

What used to be the premises of the **Discount Store** at 243-245 Lower Addiscombe Road (which has now moved between Streets Ahead and Cafe Adagio, where Bingham Hire used to be) and was



previously the Colts freezer shop, and before that the original Sainsbury’s, complete with wonderful tiled walls and gleaming mahogany counters, is being fitted out as we go to press and should be open

before Christmas. (One sentence: a whole paragraph!)

It’s going to be a **Turkish supermarket**, and they’ve managed to rescue one wall of original Sainsbury’s tiles that were covered over by Colts. There was some tile damage, but a bit of Polyfilla, Rowney crayons and clear nail varnish will fix anything...

### Electrical points



There’s an electric vehicle charging point on Lo-Add Road. It’s between two parking bays outside **Cards & Things** (where the Post Office was originally), opposite Claremont Road. If you were driving an electric car and you needed a charging point, what are the chances you would be able to park on either of the two parking spaces when you needed to?

It seems to be the real thing. There’s a choice of 3kW and 7kW and if you

need to know anything else about it, the phone number on it is 0845 (don’t you hate 0845 numbers?) 519 8676. The ID, according to the helpful label, is 300 10300.

It’s not listed on the Zap-Map website. Does anyone know if it works?

Why does **212 Lower Addiscombe Road**, on the corner of Ashling Road, look like a bank? It clearly wasn’t built at the same time as the house next door, and the stonework on the front marks it out as a commercial building. Anyone?

We have a new(ish) **telephone kiosk** in Lower Addiscombe Road. It’s a nice charcoal-black colour and a charming nod to the iconic old red public telephone box, designed by Sir Giles Gilbert Scott before the world went mad.

It’s there courtesy of New World Payphones, not BT. When you walk past it, there’s a muted roaring sound from the mechanism that rolls over the big advertisements on the back. And – this is the good bit –



# day lewis

o p t i c i a n s

305 Lower Addiscombe Road | Croydon | Surrey | CR0 6RF  
Telephone: 020 8654 5559 | email: croydon@dlopticians.co.uk

## “Welcome to day lewis opticians”

Independent opticians providing the best eye care for all the family



**Latest news!** We are pleased to announce that day lewis Croydon has been re-fitted and is now open for business.

The practice has been totally transformed with new spectacle ranges, new equipment and modernisation of the practice.

Our new spectacle ranges include **Tom Ford, Chloe, Hugo Boss, Silhouette** and **Kate Spade** among our current ranges.

Our resident optometrists Ketan Jadeja and Anjali Pattani love the new look. "The new look of the practice along with the new equipment is just amazing and the introduction of new spectacle ranges is just what our practice

needed," said Ketan. Ketan along with Anjali have special interest in Croydon's paediatric scheme where they test children's eyes from school nurses' referrals.

They are both part of the Croydon COS (Community Ophthalmology Service) scheme where patients are referred from GPs and other opticians for a second opinion. Ketan also works at Moorfields Eye Hospital Croydon as a glaucoma specialist and tutors University College London final year medical students.

**COME IN TO SEE THE NEW PRACTICE AND THE NEW RANGES OF GLASSES WE HAVE TO OFFER**

the revenue generated from the adverts will go towards weekly maintenance and upkeep.

There's a big touchscreen to give out local area information and the promised free wi-fi provided by Virgin Media doesn't seem to be working at the moment, but perhaps that's a good thing.

You can pay by cash or credit card and the minimum charge is £1. When I was a lad, a telephone call cost four old pence, in great big pennies. At the time you could buy a Mars Bar, a packet of crisps or a Sherbet Fountain for 4d – or all three for your shilling dinner money!

Anyway, you put the money in, dialled the number, and if anyone answered you pressed Button A, which released the 4d and allowed you to speak to each other. If no one answered, you pressed Button B and got your money back. It was a different world.

There are still two old BT boxes along the road. Smelly, filthy, graffiti, heavy door, but still only 60p.

### **Poor old Fairfield Halls**

The excellent *Inside Croydon* website tells us that a "Grand Re-Opening Gala," in the presence of patron the Earl of Wessex, no less, has been announced for 12 June 2019 – almost a year later than was originally planned.

The works – which are being overseen by the council-owned house builder, Brick by Brick – were supposed to take just two years from the Halls' closure at the end of June 2016. There have been visible signs of progress recently, with scaffolding ...

HANG ON! Another email from *Inside*



*Croydon's* just arrived and...

"The Fairfield Halls ... [due to] re-open in July this year following a £30million, two-year refurbishment programme, now won't be running a full programme of events until September 2019 at the earliest.

"That's the news from sources within BHLive, the Bournemouth-based firm which has been hired by Croydon Council to manage the complex." Needless to say, Croydon's er, tardiness is dealing the new operators another financial blow.

The Grand Re-opening Gala Concert has now been postponed, and it seems unlikely that Edward and Sophie will be available to attend the postponed re-opening event.

What are the chances of a

Christmas pantomime next year?

And there's talk of dropping any mention of Arnhem in the new set-up.

What a shambles.

### **Burning issues**

It's been a crisp autumn day. Blue sky, dusk coming, and you smell wood smoke. A neighbour is burning rubbishy bits of wood on their nice'n'trendy woodstove (and congratulating themselves on the money they're saving) and the smoke and smell is sinking to the ground. It's all to do with weather conditions, apparently, and blue-sky days are one of them.

It gets through our airbricks and into the house, sometimes. And it stinks.

Wood-burning stove owners are only supposed to use proper woodstove wood. This is a smoke-free zone. Burning old gateposts and floorboards is not on. It's also bad for the flue, and might even catch on fire one day, but even I wouldn't wish them that. Probably.

### **Notice bored?**

While we're talking about the park, there's a notice on the Fryston Road gates the like of which you may not see again:

*In the High Courts of Justice  
Queen's Bench Division  
In the matter of section 222  
local Government... (short  
fascinating detail omitted*

*here for reasons of space)  
... Highways Act 1980  
Between  
The London borough of  
Croydon  
-and-*

*Persons unknown  
occupying land and / or  
depositing waste  
Defendant*

**INJUNCTION ORDER**

*If you persons unknown...  
disobey this order...you  
may be held in contempt of  
court and may be  
imprisoned, fined or have  
your assets seized.*

*Any other person who  
knows of this order and  
does anything which helps  
or permits blah blah*

It's all in capitals, it must



have cost a small fortune to put in place, and just what exactly was the result?

And nothing to do with Addiscombe, but too good a story to resist. Apparently, resident ravens at the Tower of London swear at visiting children.

Christopher Skaife, Ravenmaster at the Tower,

said there is nothing more embarrassing than walking round the Tower with schoolchildren and having a raven saying "Bugger off! Bugger off!"

### **Clock this!**

Our excellent editor has written about the St Mildred's transformation elsewhere, but there's one more thing. The overall cost of the work has been £800,000, much of it from grants. The final touch will be the new removable choir stalls, hopefully before Christmas. The roof was fixed four years ago and the next project is sorting out the organ. The pipes at the back of the church don't work and, as luck would have it, there are plenty of pipes available from redundant churches.

What St Mildred's really needs, I think, is a church clock. There are even circular designs in the brickwork of the tower just sitting there waiting for one to be installed.

And the cost? Just £15,000 or so. Wouldn't it be wonderful if we, ASPRA people, could fund a clock. All it needs, for example, is 150 people to cough up £100 each and we're there. Or three people who wouldn't miss £5000 each from their premium bonds.

St Mildred's was built with significant amounts of money contributed by local residents. There were three phases, with pauses while they saved up some more. It would be fantastic to

carry on that tradition, and for a specific group of people (that's us) to crowd-fund a clock. Really fantastic.

And there's even more room for clocks, if we were so minded. The tower has



circular brickwork features on three sides.

But let's not be greedy. Just one clock would be brilliant. CG

### **Where's this** (last issue)

It is, or maybe was by the time you read this, on the front of what is to become the Turkish supermarket at 243-245 L A Rd. It's the letters IN from the original



J SAINSBURY, beautifully incised in well-spaced, gold-filled capitals in a warm red-brown marble. Them were the days.



# THE PC HELP! COMPANY

Door to Door IT Support (20+ years experience)  
No Call Out Fee

Problems with Windows 10? or 8, 7, Vista, XP, etc.

We support Apple computers, iMac, MacBooks, iPads, iPhones, etc.

Printer Problems, Android Tablets, Phones, Software, Networking, Cloud Storage...

Give your PC/Mac a Service: If your PC is slow, you have problems with updates,  
Malware, Viruses, Spyware, a slow or problematic web browser  
Pop-up messages, redirection to other sites, etc.

We test your broadband speed and can improve your Wi-Fi coverage.

We can speak to your provider to see if you are on the best deal.

Set-up Smart TVs, streaming boxes & troubleshoot a broad range of technology issues.

We provide data recovery services for lost or corrupted: Documents, Photos.

Advise on ways to back-up your data. One to one technology training.

Contact us on:

078 101 087 32

e: [daryl.seyforth@pchelpcompany.co.uk](mailto:daryl.seyforth@pchelpcompany.co.uk)

T: 0208 656 3634 (Voicemail)



## ANTHONY

## LEONARD

ASSOCIATES

### WE ARE PROUD TO OFFER A SPECIALIST RESIDENTIAL & COMMERCIAL PROPERTY SERVICE

Our highly experienced team have an extensive knowledge of all legal issues involved in the residential and commercial property markets

#### OUR SPECIALIST TEAM PROVIDE-

A professional service

No hidden charges

If you are thinking of moving  
**please call us first**

**T 020 8654 7757**

**W [www.anthonyleonard.co.uk](http://www.anthonyleonard.co.uk)**



161 Shirley Road Shirley  
Croydon Surrey CR0 8SS

**THE**  
SOLICITORS  
IN  
SHIRLEY

# HARRIS & BAILEY LIMITED

comprehensive plumbing, building & timber materials distributor

## BUILDERS MERCHANT

Over 100 years of experience as one of industry's biggest independent plumbing, building and timber materials distributor

**Harris & Bailey** offer you more choice, lower prices and invaluable technical advice

Whatever the size of your project **H&B** are well placed and ready to meet your needs

**PARKING FOR OVER 80 VEHICLES AVAILABLE!**



**ON-SITE CAFE OPEN DAILY FROM 7.30am-2.00pm**

**OPENING TIMES**

Trade Counters: 7.00am - 5.00pm

Office: 7.30am - 5.30pm

**MONDAY TO FRIDAY**

**50 Hastings Road Croydon Surrey CR9 6BR**

**t** 020 8654 3181 **f** 020 8656 9369 **e** mail@harris-bailey.co.uk **w** www.harris-bailey.co.uk



**Have you had a leak, flood, fire damage or theft and need to claim on your insurance?**

**Let us take the stress and hassle out of the whole process**

- Insurance claims handling and repairs specialist
- Refurbishment and repairs to local government and academy schools
- Replacement kitchens and bathrooms
- Plumbing
- Electrical installations
- Surveying
- Leak detection
- Damp mapping and drying
- Plastering
- Roofing
- Gas safe work
- Painting and decorating
- Asbestos surveys and removal
- Carpentry

We are a local family run building company specialising in insurance claims and repairs. We were established in 2002 with a view to making the whole process of claiming on your building's insurance hassle free. We provide an all-inclusive service. From carrying out an initial survey and providing a summary and quote. To meeting and negotiating on your behalf with your insurer's representatives and completing the repair works to return your home back to its original state.

**Demarc Enterprises Ltd**  
**Office: 020 8405 0789**  
**Mobile: 07811 331 174**

**41 Manor Way**  
**South Croydon**  
**Surrey CR2 7BT**

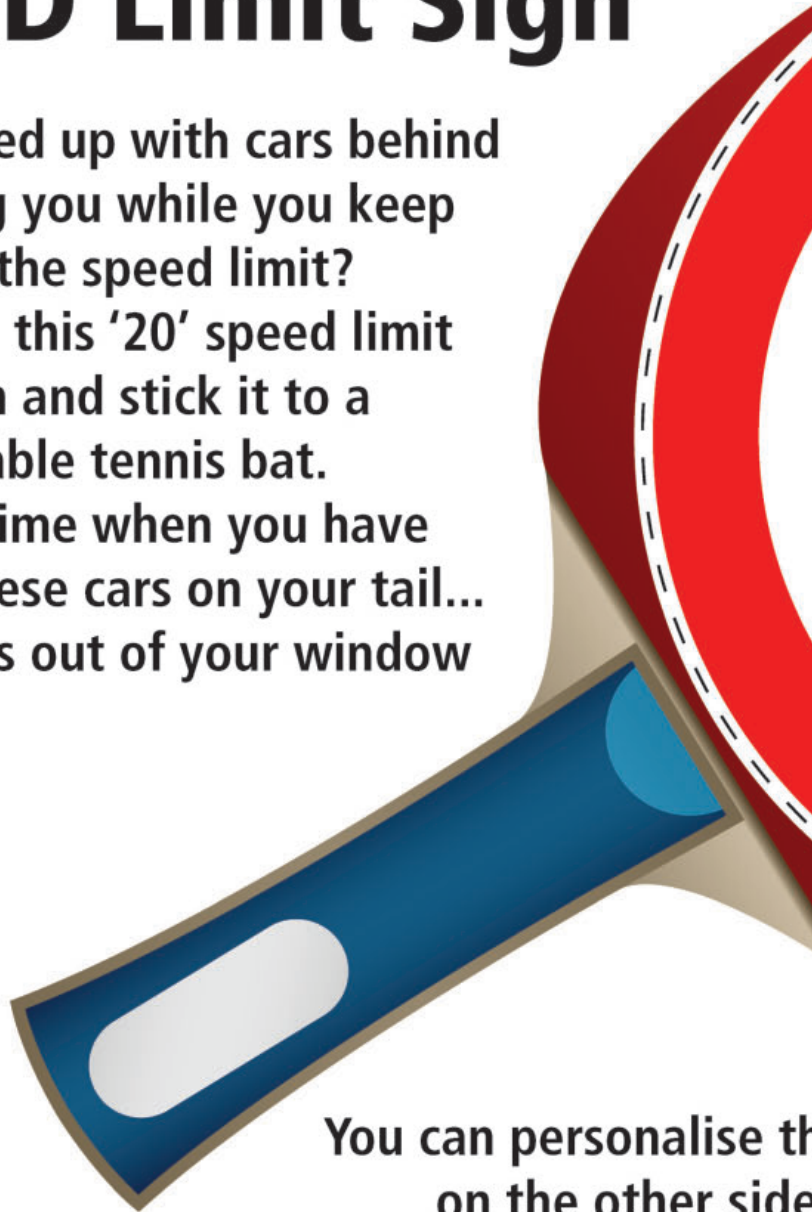
**[www.demarcenterprises.co.uk](http://www.demarcenterprises.co.uk)**

# Your Personal **SPEED** Limit Sign

Are you fed up with cars behind pushing you while you keep to the speed limit?

Cut out this '20' speed limit sign and stick it to a table tennis bat.

Next time when you have one of these cars on your tail...  
Hold this out of your window



You can personalise the sign  
on the other side



his bat by putting your own personal message  
... We don't want to give you any wrong ideas 😊

# Liquid Trading



Liquid Trading, based in Croydon, Surrey, offers a wide range of building, shop-fitting & architectural services at competitive prices. We make it our aim to deliver a first class service at all times, ensuring that all work is completed on time and to the highest of standards. From the simple jobs such as general maintenance, to more extensive projects like fitting a new shop from scratch, we have the skills and experience necessary to meet your requirements. Get in touch with us today to see what we can do for you!

For further information  
please call us on

**07724 779778**

31 Radcliffe Road | Croydon | Surrey | CR0 5QJ

# Vic Gibson Butchers Ltd

## QUALITY BUTCHER & DELICATESSEN



We offer a wide range of meats including:

- Sausages
- Homemade pies
- Farm fresh turkeys
- Barbeque meats
- Game



**020 8654 5147**

**07949 425 319**

## ADDISCOMBE SECURITY CENTRE

**For all your  
Security needs**

**8 Bingham Corner  
Lower Addiscombe  
Road CR0 7AA**

**Next to Addiscombe  
Tram Stop**

**Tel: 020 8655 1677**



**Email: [addiscombesc@aol.com](mailto:addiscombesc@aol.com)**

## Addiscombe Village Jumble Trail

*'Had a great day. Lots of bargains. Great community' – from a visitor*

*'We had a great day today and really enjoyed meeting all the people milling about' – from a stallholder*

On Sunday 30 September, 73 stalls were set up in the streets of Addiscombe Village offering an array of treats, treasures and bargains.

This year, neighbouring residents' associations Blackhorse, CHASE and HOME joined forces with ASPRA to make the 2018 event even bigger and more widespread than previous years. We welcomed back some regular stallholders and were delighted to have many newcomers too. It was a good mix of nearly new items, books, children's wear and toys, handmade cards, original art, homemade chutneys and cakes and the most popular item listed was 'bric-a-brac'!

One of the aims of the Jumble Trail is to encourage a sense of community. We would like to thank all the stallholders and visitors who participated and our colleagues in the other residents' associations who provided support. The weather held fair, and it was great to see so many people enjoying a stroll through our neighbourhood in the sunshine.

We are very grateful to LMB Group Ltd who kindly printed the booking forms at no cost to ourselves. Also Rob at Addiscombe Security Centre and Café Adagio owner Atif who did a brilliant job receiving all the forms and handling a variety of enquiries. We appreciate the support of Cllr Maddie Henson in funding some of our stationery expenses, plus all the local traders who displayed posters. This has meant that every penny of the £5 booking fee can go towards funding the Addiscombe Village Christmas lights. The total raised was £365.





This year, we were unable to make use of the website [www.jumbletrail.com](http://www.jumbletrail.com) to manage bookings and to publicise the event. This meant far more work for us, the Jumble Trail organisers, and lots more use of social media to try and reach as many potential visitors as possible.

We were disappointed not to have been able to visit all the stalls on the trail but there just wasn't enough time to get round to visit everyone. But those we did see on the day were feeling very positive.

Unfortunately, those stalls slightly on the periphery did not receive as much footfall as the ones more centrally located. It certainly helped when there were clusters of stalls together creating quite a buzz.

Lots of people are already saying they are looking forward to next year's event! If that's the case, we would welcome some more volunteers to help with the organisation.

If you have any feedback about this year's event or want to be involved in the future, please email [addiscombe.jumbletrail@gmail.com](mailto:addiscombe.jumbletrail@gmail.com)  
*Lyn and Jenny – Jumble Trail Champions*



*Joanne Mills (below) with 'the fabulous, toothsome, Margaret', her mother*



## Your ASPRA committee



### **Chairman**

Steve White  
chairman@theaspra.org.uk

### **Vice-Chairman**

Mary Alexander  
vicechairman@theaspra.org.uk

### **Treasurer**

Frederick Law  
4 Parkview Road  
treasurer@theaspra.org.uk

### **Secretary**

Gill Lee  
38 Northampton Road  
secretary@theaspra.org.uk

### **Editor**

Phil Poole  
editor@theaspra.org.uk

### **Advertisement Manager**

Colin Gamm  
adverts@theaspra.org.uk

### **Webmaster**

Bob Sleeman  
info@croydon-it.co.uk

### **Email Postmaster**

Dave Lee  
38 Northampton Road  
contact@theaspra.org.uk

### **Projects Consultant**

Hilary Chelminski  
projects@theaspra.org.uk



### **Group Aims**

Promote co-operation between the practice and the patients to the benefit of both

Raise awareness of and improve access to other support agencies

Encourage communication of public health messages

Promote improvements for all patients and the community

If you want to have your say and make your voice heard, or wish to find out more, contact:

***Surgery Reception on  
0208 654 1427***

***www.stovellhousesurgery.co.uk***

***or email  
contact@stovellhouseppg@  
gmail.com***

# **The Claret and Ale**

***Croydon CAMRA Pub of the Year 2017 – 8th time***



**5 Bingham Corner, CR0 7AA – tel 020 8656 7452**

**Next door to Addiscombe tramstop**

***Palmer's bitter plus five guest ales and traditional cider on tap. Five lagers. Seven ciders. Nice community Pub.***

***We do show sport but with volume only for special events. We look forward to seeing you.***

***See Google reviews for extra pub info.***

## Sad celebration

### Addiscombe remembers

This year Armistice Day, 11 November, will fall on a Sunday. After the commemorative services, at 12.30pm, churches all over the country are planning to ring their bells in celebration of the peace achieved one hundred years ago, in November 1918.

There can be very few people today who would feel much sense of triumphalism in the act of remembrance, but many to whom the sacrifice of millions is reduced to the personal loss of family members which still must have echos across the decades since 1918.

During the years of fighting, the British military suffered 885,000 dead. Overall, 20 million men-at-arms from all of the involved nations died during the conflict, and it's the sacrifice of that generation that I think we remember when we think of the first World War.

Croydon certainly felt the impact of such losses. From an estimated population (in 1914) of around 160,000, we sent some 25,000 men off to the war. Two thousand five hundred were killed, while 10,000 came back wounded.



**Men from the Croydon Territorials pass the almshouses en route to the station and onward into France. August 1914**

This will all inform our reflections this Autumn, and in Addiscombe we've been utilising the lampposts in the Lower Addiscombe Road to make a display of large poppies right along the high street. Poppies have been the symbol of remembrance of loss in war since World War I, but that memory now extends across the second World War and all of the conflicts since. Sadly too, we reflect on the many thousands of civilian lives that have also been lost to acts of war and terror.

Through all of the sadness and sense of futility remembrance inevitably brings, there are also brighter considerations.

Hilary  
Chelminski the  
ASPRA Projects

Supremo, recently found a copy of an old letter sent home from a cousin's uncle written as he served the last year of the 1914-1918 war in Egypt and (the then) Palestine. All the while preparing to fight the Turkish army, Victor Ive reels of the names of exotic Egyptian desert locations, eventually arriving at Beersheba and 'the promised land'. Battles with 'Jacko' are described with an almost *Boys' Own* zest, accompanied by Victor's undeniable enthusiasm for his surroundings and the people that he meets. As it was all contained in a long letter to his mother, then it's understandable that he puts a positive bias on to everything, making light of anything that might suggest fear or danger. Perhaps the most telling lines are kept until the end where he says he is 'cutting the letter

short' and 'perhaps in a month or two give you the rest...over the sitting room fire'.

There's an unexpressed desire there, I think, acknowledging whatever stimulus the war might have provided, to 'get the whole thing over'. That must have been incredibly strong after four years of fighting. It's hard to put oneself into the minds of young men in their late teens or twenties, prepared to go off in their thousands, and risk their

lives for King and Country but it's easy to understand how much hearth and home came to mean to those men when they eventually returned.

A terrible sense of waste and loss has

permeated Armistice Day celebrations since 1919. There is no one left in Britain now who fought in World War I and the numbers of veterans of the second World War diminish with the passing of time. Many families, however, can't forget the losses, now just perhaps represented by a fading sepia photograph of a smart young man in uniform. Or maybe the later losses of uncles, aunts and cousins from the attacks on civilians during WW2. These people all deserve to be remembered and deserve our respect.

Armistice Day doesn't celebrate jingoism or victory, but is more of a reflection on human frailty. All the more reason to honour the memory of those who lost their lives because of it. PP



## What's on!

There's a lot going on in and around Addiscombe

### Concerts

**Saturday 10 November from 10.00am to 10.00pm**  
**Croydon Bach Choir invite you to 'Come and Sing'**

*Monteverdi Vespers of 1610*

A full day's workshop open to singers of any standard who are able to follow a score. We will explore and perform the Vespers under the direction of Tim Horton, with William Munks accompanying on piano.

**St Matthews Church, Chichester Road, Croydon, CR0 5NQ**

Tickets £20.00 include score hire and refreshments. The day will end with a free informal public performance. We do require registration and payment in advance. Contact us in good time at [membership@croydonbachchoir.org](mailto:membership@croydonbachchoir.org)

**Saturday 24 November at 7.00pm**  
**St John the Evangelist Church, Shirley Church Road, Shirley, CR0 5EF**

*Tree-Fest Concert*

Tickets £8.00 in advance £10 on the door — admission includes refreshments. For more information contact: [treefest2018@gmail.com](mailto:treefest2018@gmail.com)

### Theatre workshops

**CYTO (Croydon Youth Theatre Org)** is a real theatre experience for the 13 -21 age group. We always welcome new members. There are Friday night drama workshops for all

abilities & levels of confidence and tech workshops on Monday evenings plus regular productions.

For more info check out our website, or email [admin@cyto.org.uk](mailto:admin@cyto.org.uk) or call **020 8655 1098**.

### Church services at St Mildred's

**Sunday 11 November from 10.00am**

*Remembrance Sunday*

**Sunday 23 December from 6.30pm**

*Carol Service*

**Monday 24 December (Christmas Eve) from 4.30pm**

*The Tea Towel and Tinsel Children's Service*

**And, from 11.30pm**

*Midnight Mass*

**Christmas Day (Tuesday 25 December) from 10.00am**

*All Age Communion*

### Clubs and societies

**Addiscombe & Shirley Rotary** support many charities, which reflects the make up of our membership, who come from all walks of life. If you are interested in contributing and making a difference to those less fortunate, then **Addiscombe & Shirley Rotary** is the place for you. To find out more about your local Rotary, please see our website [www.aandsrotary.org](http://www.aandsrotary.org) or tel:

**08448 849743.** You will be made most welcome as our varied Tuesday evening activities are sprinkled with fun and laughter!

Our annual Christmas collection around the streets of Addiscombe & Shirley starts on December 3<sup>rd</sup>. Look out for Santa and his sleigh in your street over the following 2 weeks and we hope you are able to donate as generously as you have in previous years.

### **Shirley & District Probus Club**

Probus is a fellowship group for retired professional and businessmen. The **Shirley & District** branch meet for a monthly lunch on the fourth Wednesday of the month at the **Shirley Park Golf Course**.

This is a friendly group and our pick-a-seat-at-random system ensures there are no cliques at the dining table and banter flows easily in a relaxed atmosphere – new members feel welcome from day one. Cost of membership and meals is modest. If you would like to find out more and widen your circle of friends please contact Barry Copeman on **0208 777 2889**, or e-mail [barry.probus@gmail.com](mailto:barry.probus@gmail.com).

## **Drawing and painting**

**The Croydon Sketch & Painting Group** are a local art group seeking to recruit new members of all abilities. They meet on **Wednesday mornings** between **10.00am** and **12.00pm** in the large hall at Christ Church Methodist, 114 Lower Addiscombe Road, CRO 6AD.

If you've ever fancied trying your hand at painting or drawing among

like-minded friendly people; give us a try! Your initial visit is free, but an annual subscription costs just £22.00 (then £1.00 attendance fee per visit). Tea and coffee are provided.

You will need to bring your own materials.

For more information please contact Gill on **0208 662 0378** or just pop along!

## **Christmas festivals and markets**

**Friday 23 November (1.00pm to 7.00pm), Saturday 24 (11.00am to 5.00pm) and Sunday 25 November (12.00pm to 4.00pm)**  
*Christmas Tree Festival and Christmas Market*

**St John the Evangelist Church, Shirley Church Road, Shirley, CR0 5EF**

Entrance Tickets £3.00 (accompanied children free)

**Saturday 1 December 12.30pm - 4.30pm**

*St Mildred's Christmas Market*

Join us for quality food, mulled wine, live music and Santa!

**St Mildred's Church, 30 Bingham Road, Addiscombe, CR0 7EB**

**Saturday 8 December** (times to be advised)

*Addiscombe east Christmas event*  
Ashburton Hall, Ashburton Park, CR0 6RX

A Christmas fair with carols, stalls and yuletide refreshments.

Contact Maddie Henson for further details ;  
[maddie.henson@croydon.gov.uk](mailto:maddie.henson@croydon.gov.uk)

# Addiscombe Pharmacy

Your friendly local pharmacy

Health and wellbeing advice

Prescription collection service  
from local surgeries

Prescription delivery service  
to the housebound

Walk-in NHS and private flu  
vaccination service

Private travel clinic, offering  
advice and vaccinations

**Opening times**

Monday–Friday: 9am–6pm

Saturday: 9am–1pm



331 Lower Addiscombe Road  
020 8654 1524



## Local pharmacies

Here are the opening hours of our local chemists. Purley Way Sainsbury's opens on Sundays.

### Addiscombe Pharmacy

331 Lower Addiscombe Road  
Telephone 020 8654 1542

#### Opening hours

Mon - Fri 9am - 6pm

Saturday 9am - 1pm

### Boots

257 Lower Addiscombe Road  
Telephone 020 8654 2128

#### Opening hours

Mon - Sat 9am - 5.30pm

### Larchwood Pharmacy

215 Lower Addiscombe Road  
Telephone 020 8654 1149

#### Opening hours

Mon - Fri 9am - 7pm

Saturday 9am - 6pm

### Shirley Pharmacy

175 Shirley Road,  
Telephone 020 8654 1065

#### Opening hours

Mon - Fri 9am - 7pm

Saturday 9am - 5pm

**For longer opening hours  
and Sundays:**

### Sainsbury's Superstore

Trafalgar Way  
Telephone 020 8681 5800

#### Opening hours

Mon - Fri 7am - 11pm

Saturday 7am - 10pm

Sunday 11am - 5pm





## Your local pharmacy

If you have received a leaflet through the post from an **internet pharmacy**, even if the letter carries the NHS logo you are **under no obligation to receive your NHS medicines from them.**

It's easy to think that your GP surgery is advising you to use internet pharmacy services. This is not the case.

As a family-run pharmacy, we are proud to serve our community. **Without your support, though, high street pharmacies will not be there for you in an emergency.**

Have your prescriptions dispensed locally and benefit from the additional services closer to home.

Addiscombe Pharmacy 331 Lower Addiscombe Road 020 8654 1542



## Good as gold: Robert Jones, diamond geezer

The jewellery expert on *Antiques Roadshow* can't pronounce the word. He says *joolery* – joo-le-ri – which as any fule kno is just wrong.

It's *joo-el-ri* isn't it. I bet he says tumouric and vunrable too.



But enough of that. A person who makes jewellery is a jeweller, right – and we've got our very own right here in Addiscombe. A craftsman, a goldsmith, right here on the doorstep. And hardly anybody knows he's there.

Robert Jones is the man and he's a FNAG – a Fellow of the National Association of Goldsmiths. At sixteen he went into a five-year apprenticeship with a West End firm that made stuff for the chic shops in Bond Street. No names, but these were posh, well-known brands. The Queen gets her silverware from at least one of them.

And that's not all. Because he'd been trained under a master, Robert became a Freeman of the City of London at the end of his apprenticeship at the tender age of 21. It might not entitle him to herd sheep across London Bridge, or wear an unsheathed sword in public, but in the event he should

ever need to be hanged it does entitle him to a silken rope, rather than the coarse stuff they make nooses out of when us commoners face the drop. Classy.

At 21 he started working for himself, from home. He's just had his 60th birthday and hasn't had one day, he says, when he hasn't been busy – in 40 years. He never knows what's coming in next; every day is a surprise and he can honestly say he enjoys everything. Lucky b\*gger.

Robert opened a shop in South Croydon in 1977, where he did a lot of repairs and suchlike (it's called trade work) for, among others, the one and only Warren Hall of our very own jewellers, Hall and Manton (as it was at the time). Long story short, Robert and Warren amalgamated businesses and Addiscombe now has its very own jewellery quarter.

Our Robert works in gold, silver, platinum and precious stones to make



outstanding pieces – and all in a Tardis-like workshop in Aurum, the jeweller's (ex Hall & Manton), at 290 Lower Addiscombe Road, opposite that unsightly pretend-deco



Gold, silver,  
precious  
stones and  
pearls —  
Robert's take  
on a 1920s  
Dorrie  
Nossiter arts  
and crafts-  
style brooch

building where the Black Horse used to be. Robert sits at the bench with a permanent flame torch going and a leather apron over his knees to collect those precious gold filings. There are tools and things everywhere; it might look a bit random but everything's organised, to hand.

There's a lot of time-honed skill available. Robert will make anything to your specification, assuming it's humanly possible. He will remodel your old jewellery, or melt down and use your gold to make a special item. It's a favourite option: using your own gold saves on cost and keeps the gold in the family. Otherwise bullion and stones come from Hatton Garden, London's jewellery hub.

His latest project (see pic) is a Dorrie Nossiter-style brooch which, if original, would cost in the region of £2k. It's 1920s arts and crafts in style, in gold, silver, stones and pearls, and it's really very nice.

Robert also offers a first rate repair service to precious items, from basic chain repairs and ring resizing right through to complete repairs of antique jewellery.

And he's bloody good at it. He's cheerful and reliable and even Warren says he's astonishingly competent.

So there you are. Artisan jewellery, special, bespoke, *completely* unique. Hand made in Addiscombe, with Robert's hallmark to prove it.

*Aurum: 290 Lower Addiscombe Road,  
CR0 7AE. 020 8656 5095  
enquiries@aurumcroydon.com*

## ASPRA needs your help!

### We're looking for volunteers

Editorial team

Local issues planning group  
...and loads of gardeners to help  
with our planting in Bingham Park

We are an enthusiastic and committed committee and will give you all the help and support you need. Without volunteers to fill these roles it is more difficult for the Association to function smoothly. If a local residents' association is important to you, please think about getting involved.

**Please contact the Secretary for  
more information**

# Mandells

## Domestic Appliances LLP

- Family-run business with over 25 years' experience in the repair of domestic appliances.
- All makes and models of washing machines, tumble dryers, dishwashers, ovens, hobs, cookers.
- We have one set price for labour.
- We can also supply and install a new appliance for you at a competitive price.
- We are proud members of TrustATrader.com with nearly 400 reviews.

**21 Greenway Gardens, Shirley CR0 8QJ**  
**info@mandells.com www.mandells.com**



**0208 777 7770**



## What's on at Ashburton library



### Monday talks\*

**Monday 5 November  
from 11am**

*The Gordon Riots*

**Monday 26 November  
from 11am**

*1918:100 Days to end the Lousy  
War*

### Chair based fitness classes\*

**Friday 19 October, also  
Fridays 2, 16 and 30th  
November 11am – 12 noon**  
Please wear loose, comfortable  
clothing

*\*Admission to talks & events is free  
but booking is essential*

### Crime reading group

This friendly reading group meets  
once a month on a Monday  
*New members welcome!*

### JustBe Croydon Live Well advice

**Every Monday, 12 noon**  
Want to lead a healthier  
lifestyle? Drop in to meet  
your *Live Well* advisor  
for advice and support.

### Regular children's events (term time only)

**Book Buddies –  
Thursdays at 4pm.**

Listen to stories and join in with  
fun crafts for under 7s

### Homework Club

Every **Tuesday and Thursday  
3.30pm – 5.30pm** and **Saturday  
2pm - 5pm**

For children aged 9-16 years

**Please contact Ashburton  
Library to receive our monthly  
email with the latest  
information about all our  
events for adults & children.**

**020 3700 1001**

[ashburtonlibrary@croydon.gov.uk](mailto:ashburtonlibrary@croydon.gov.uk)



# DECKBOARD HARDWOOD

## FLOORING CENTRE

We are a family-run business specialising in engineered/solid/laminate and beautiful bespoke hand-finished products.

We stock accessories, cleaning products, adhesives and oil and lacquer finishes.

A visit to the showroom is a must to browse, choose and get advice.

At the start of your project? Plan for your floor now.

Services provided:

Supply-only or supply-and-fit service

Measuring service

Site assessment

Insurance quotations

Our products carry warranties of up to 25 years

Our installations are covered for 12 months.

We have a next day and 48 hour delivery on many products.

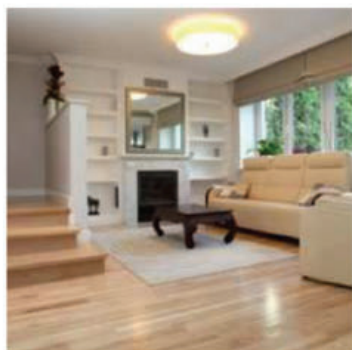
### SHOWROOM

271 PURLEY WAY, CROYDON CR0 4XF

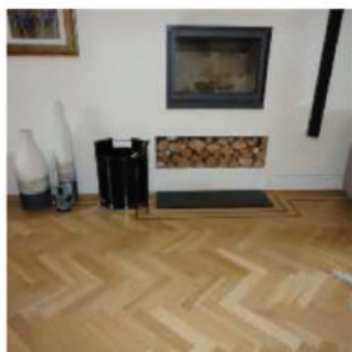
TEL: 020 8688 8687

email: [info@deckboard.co.uk](mailto:info@deckboard.co.uk)

[www.deckboard.co.uk](http://www.deckboard.co.uk)



Established in 2002



Members of ASPRA



## Planning stuff

The four flats in the semi in Lower Addiscombe Road next to the tramstop appear to be coming together. Unkinder members of our community are suggesting that the short floor-level window first-floor, on the right, looks not only as if it could have been drawn by a child, but that it must have been blinked through by the planning dept during an electricity outage coinciding with a solar eclipse.



Nothing could be further from the truth. It is clearly a skilful architectural tour-de-force, acknowledged and agreed by the wisest planning brains in the universe. What does look odd is the high-level fence at the front of the house. This sort of thing used to be turned down by planners – fences this high were allowed in back gardens, but 4ft 6in was the universally accepted fence height in a front garden.

The other thing that looks odd is the bin shed. There's such a distinct dog-leg in the fence-line behind the tram stop that the shed looks like a land grab. Clearly nonsense, of course; nothing that significant could ever slip by our eagle-eyed council guardians.

*Right:  
114 Addiscombe Road*

The plot at the top of Northampton Road behind the vet's has been boarded up as if work is about to begin. Anyone interested in stealing nettles and brambles from the site, but daunted by the enormous padlock and chain on the gates, needs only a cordless screwdriver capable of taking out 15 screws to gain access. Alternatively, they could nip over the 3ft fence between the plot and No1 Northampton Road.

Let's hope that lowering the ground level is part of the plan. It's at least 4ft higher than 1 Northampton Road and will dominate the entire road if it isn't fixed.

When a planning application went in to turn 114 Addiscombe Road, a semi-derelict detached house almost opposite Cheyne Walk, into nine flats (see our summer issue), the Whitgift Estate Residents Association saw it as the thin end of the wedge. If it was approved, they reasoned, we could expect a flood of further applications when owners of large houses on Addiscombe Road sold up and developers rubbed their hands in glee. Flats as far as the eye can see. Among other objections, and this is an issue for ASPRAphiles, parking limitations would result in a problem for ASPRA residents.

The application has yet to be approved but Croydon wants flats, so WERA has been setting up a fighting fund to take it further. They have asked Whitgift Estate householders for significant contributions



and as of now an enormous fighting fund has been established. The Croydon council website shows 308 planning comments: in the first four pages someone in West Hill, South Croydon, was neutral and someone in Thatcham, near Newbury, objected.



Meanwhile, the roof of the unremarkable bungalow at 114 Addiscombe Road has disappeared under a huge polythene pergola. Planning permission was given last March to add a first floor and a side extension. Smart move. The owner subsequently applied for planning permission to build a single-storey home office and gym at the end of the garden. It was approved as lawful development. Not a problem to Whitgift estate residents.

The planning application for 73 flats (I might have the number wrong, but it was a

*Unique in Addiscombe: this pair of early Edwardian semis, with decorative tilework, sash and casement windows, unlike no others*



lot) in the four/five bedroom semi at 63 Northampton Road seems to have been withdrawn, and planning applications for a several little extensions put in instead.

The first was for a three-metre ground floor extension at the rear, a dormer extension in the rear of the roof slope and a roof light (window) in the front roof slope. The sort of normal extensions a normal householder might put in for completely normal purpose; normal permitted development under Town and Country Planning law.

Then another application went in for the rear extension to be doubled in area – a 6m (20ft) extension with a gap in the middle, giving separate extensions to the kitchen and back room. And suddenly quite different to what neighbours have done with a single unifying extension across the back. Neighbours are hoping this isn't development by stealth. You extend the building with permission, then change the inside dramatically...

The planning application for 49-51 Shirley Road (the shops between the Cricketers pub and Shirley Park Road) involved demolition of rear buildings, erection of a rear roof extension and front dormer windows, and erection of a three storey rear extension to form retail storage at ground floor, plus seven two-bedroom flats and one one-bedroom flat on upper floors. It also included provision of associated off-street parking, provision of associated refuse and cycle storage. Permission was refused on 10 May this year. What next?

Meantime, the development being built behind the Cricketers pub at 47 Shirley Road is continuing apace. This is the development that has caused so much anguish to a number of residents of Shirley Park Road who will shortly wake up to find six two-storey buildings (with accommodation in roofspace) at the end of their gardens providing six one-bedroom, eight two-bedroom and four three-bedroom flats. That's 18 flats, 29



The garage on the left-hand side at the Lower Addiscombe Road end of Sherwood Road, opposite the chapel, is a bit of an eyesore, if we're honest. Fortunately, a planning application has gone in to replace it with a flat-roofed, two-storey, two-bedroom house, seemingly way ahead of the building line.

Visually, and this is a real plus to the tired old appearance of the street, the house looks like two shoeboxes piled one on the other, with a kind of waggly concrete finish to make it even more attractive. So refreshing. Let's hope this brave design is nodded through with gusto, and the namby-pamby nimbys in Sherwood Road are shown the contempt they deserve.

Who are they to attempt to thwart exciting, forward-looking council planning policies? The nerve. You can't stop thoughtful, council-tax driving progress. [Planning application reference 18/04373/FUL]

bedrooms, lots of people, cars, bicycles and suchlike.

It's a huge site, much bigger than I imagined. The pub will retain 10 parking spaces and its rear garden. It could look brilliant, but for some residents it's all a bit close to their rear fences.

The recent single-storey side extension to No31 Northampton Road ended up barely six inches away from the flank wall of No29, as a consequence of which the window in 29's downstairs loo stopped being a window, inasmuch as it didn't actually allow light in. When the planning dept was challenged, a staff member who visited the travesty pointed out that it was within council policy and guidelines and built exactly to planning specification, so there was nothing anyone could do about it. Yar boo sucks, as the immortal Nigel Molesworth (showing my age here) used to say.

All's not lost, however. The kind owners of No31, realising the oversight, have offered to pay for blocking up the window and installing a nice new ceiling light to compensate. Meanwhile, a friend has invented the expression 'plankers', a portmanteau word bringing together the beginning of 'planning' and, er, he didn't explain the rest. Tankers? What can he mean?



*The editor writes: This sort of twaddle is all very well but what we really need is someone to keep an eye on planning stuff for us, and report it in an inclusive and credible way in ASPRA magazine. If there's anyone out there with a planning itch to scratch, we'd be very pleased to hear from you. May I also recommend the Inside Croydon website, which covers a great deal of iffy planning decisions., among other fascinating local issues.*



# S. J. WHITE SERVICES

(est 1968)

## Your local BUILDER

Extensions  
Conversions  
Loft rooms

Qualified carpenters

Qualified electricians



PLANNING  
PERMISSION



BUILDING  
REGULATIONS



INTERIOR DESIGN



0208 407 0362  
07960 386677

## Parker Brothers

**We are a long-established,  
friendly, family business**

Servicing and repairs for all vehicles –  
new and classic



MOT testing while you  
wait or by appointment  
MOT test £45 with this ad!

Bodywork and welding

Car sales

No repair too small!

Classic car restoration

**Parker Bros (Croydon) Ltd**

9 Bywood Avenue, Shirley CR0 7RB  
020 8654 1923



## SELL YOUR CAR

Low trade-in valuation?

Having trouble selling?

I will come to you and  
will buy within 24 hours.

Local service – Shirley  
and Addiscombe

**07896 627853**

THM Autos, Addiscombe

# The last Wednesday in October

## Nothing to lose any sleep over

It was Pete who saw him first. I was locking up the Northampton Road gate and he was just sitting in the van, waiting for me. Like usual, I was going to go back, get in the van and he'd reverse out, lock the gate and then we'd drive round to Bingham and lock that. End of October and the last half-past-five session for both of us 'til the Spring.

So it was getting quite dark and Pete had the lights on as I walked back up. He leaned out the window.

'There's an old geezer over there,' he said, pointing toward the old toilet block. 'You must've missed 'im.'

'What?' I exclaimed. 'I ain't missed no one!' But I looked round anyway.

Sure enough he was just sitting there, in the early evening gloom, not looking at us or anything much, just kind of still and peaceful, sort of minding his own business really, but of course we couldn't leave him there. I walked over to him.

'Sorry mister,' I said, 'but we're closing the park now. It's getting up toward six and we've got to lock up.'

That's when he looked at me. It's hard to describe that look, but it was like I knew him and he knew me and every secret thought I'd ever had. He smiled and all my cares and considerations went away.

'It's Wes, isn't it?' he said, his voice as soft as silk.

'You know me?' I whispered.

'Oh,' he said, like he was talking to a child, 'Wes, I know everybody round here. You, and your friend Pete in the van, all of the people in all of the houses, all of the people in the church, all of the people in all of the shops, all of the people that drive up and down. Everybody.'

I just stood there trying to make words but powerless to do so.

'Don't worry, Wes,' he said, 'I'll leave the park when I'm ready, perhaps a little later tonight after I've met a few friends. You and Pete mustn't worry about me, just do what locking up you have to do and go home. You could almost forget all about me.'

I nodded, but somehow I remained rooted to the spot I was standing on. I looked round for Pete, half expecting him to be shouting for me to get a move on or something. But he was just sitting in the van, looking straight ahead, almost as if he wasn't seeing anything at all.

The old geezer snapped his fingers and I jerked back round, now giving him my full attention, my heart pounding in my ribs.

'I love this time of year,' he said and gave me a lovely smile. 'The smell of decay and gentle burning quite stirs me, you know?'

I shook my head.

'And the children. Running around with silly masks and hollowing out pumpkins. It brings back some fond old memories.'

'Yes?' I said.

'Oh quite!' he said. 'And in England now, when they celebrate the death of poor old Guy Fawkes with the fireworks. I do love the smell of sulphur on the air. Don't you?'

'Don't know,' I stammered.

'Well, I suppose not,' he smiled again. 'After all, you and I probably won't meet again, you trying so hard to be a good chap and all; but do tell Pete to watch the gambling. I don't really want to see him again either, but sometimes even I can't stop people from going their own way in these matters.'

'No?'

'No. And, do you know what? People blame me for the mistakes they make, blame me for the bad choices, blame me for decisions of politicians, of soldiers and the

like. They even blame me for the weather. Now, how bad is that?’

I nodded again.

‘I have friends in high places, you know?’ He went on, ‘Or, at least I did have.’ He paused as if to reflect. ‘They can be the cause of as many problems as anything I’ve done, you know? Or, at least the way you people think about them can.’

‘Not your fault,’ I muttered.

‘Free will, eh?’ he said. ‘I wouldn’t have given you that. It’s a bit of a design fault I think. Still, we’re stuck with it now.’

I nodded again.

‘Well, Wes,’ he got up from his seat and took my hand, shaking it enthusiastically, ‘it’s been lovely to talk. I don’t often get these opportunities and I do so enjoy them. But you must rush off now, and close the park with Pete. Do tell him off about the gambling and keep on being a good bloke yourself. I’ve got a busy night ahead and a few people to give a bit of a scare to, you might say. Take care.’

As he said his last words he stepped back from me and began to fade into the gathering gloom.

‘Wait, wait,’ I felt compelled to call out to him. ‘I don’t even know your name.’

‘Most people call me Nick,’ he said, and was gone.



# Arthur's Barbers

Cutting hair in  
Addiscombe for more  
than 40 years

Monday to Thursday 9am - 6pm  
Friday 9am - 7pm ✕ Saturday 8am - 6pm  
Sunday 10am - 4pm

317 Lower Addiscombe Road

It's a snip! ☎ 020 8662 0811  
OAP rates Monday to Thursday

## DP ROOFING

Specialist in flat roofing,  
slating and tiling

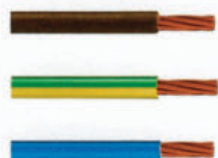
All work guaranteed

Free estimates

30 years' experience

Tel: 020 8656 8708

Dave Patey  
45 Kingscote Road  
Addiscombe



# THE POINT

## ELECTRICAL SERVICES



**ALL ELECTRICAL AND MAINTENANCE WORK UNDERTAKEN**

Registered Electrician Proud members of **Checkatrade.com** Where reputation matters **No job too small!**

- **EXTRA SOCKETS AND LIGHT POINTS**
- **UPGRADE CONSUMER UNIT**
- **PART AND FULL REWIRING**
- **ELECTRICAL INSTALLATION CONDITION REPORT**
- **SMOKE DETECTORS**
- **LANDLORDS' CERTIFICATES**

For a free quotation please call **07376 146 380**  
or email **evpoint@hotmail.co.uk**

# TD

*We Have Moved*

**FOR ALL YOUR  
PRINT REQUIREMENTS**

## PRINT & SIGNS

Graphic Design • Corporate Identity • Logo Design • Leaflets  
Order of Services • Flyers • Posters • Photo Copying • Mugs  
Banners • Business Cards • Brochures • Laminating • Menus  
Logo Design • Roller Banners • T-Shirts • Invitations • Folders  
Magazines • Magnetic Signs • Builders Boards • Shop Signs

*Where Customer Service still matters*

**304 LOWER ADDISCOMBE ROAD • SURREY CR0 7AE**

**TD PRINT@BTCONNECT.COM**

**020 8656 0888**

# OVEN CLEANING SERVICE

**Non-caustic • Non-corrosive •  
Non-toxic agents  
All eco-friendly products**

Repairs to cookers, ovens, washing  
machines, dryers and dishwashers

**Leave the dirty work to us!**

Call Monday to Friday (5 to 7pm)  
Saturday (3 to 6pm)

**Tel: 07960 272493**

## desresblinds

Customer service and  
quality guaranteed by  
established local family  
business.

We have a dedicated  
specialist (each of  
whom has worked for  
us for years) for each of  
the products below:



All types of window blinds Conservatory roof blinds  
Shutters  
Awnings/Canopies Curtains Window Film

Call or email us for a brochure or appointment. We  
also invite you to look at our website  
tel/fax 020 8651 3569. Mobile 07961 827 917  
email: [info@desresblinds.co.uk](mailto:info@desresblinds.co.uk) web:  
[www.desresblinds.co.uk](http://www.desresblinds.co.uk)

## Poetry Corner!

Janet Ambrose, Addiscombe's very  
own published poetess has very kindly  
sent us these wonderful observations  
from Bingham Rec:

Our Very Senior Citizen

Our Oak

*Great Oaks from little acorns grow.  
(A process which is very slow).  
And so it's awesome you'll agree  
When looking at our massive tree.  
Enormous canopy trunk and bark  
She's by the path in Addiscombe Park.  
How long has she been standing  
there?*

*For centuries I would declare.  
Is she the oldest living thing  
In Croydon. If you know give the  
editor a ring*

Dog-Sinners

*There's nothing worse you must  
confess,  
Than treading in your own dog's  
mess.  
As an owner you are bound,  
To diligently search the ground,  
And you know you must not stop,  
Til you've identified the drop.  
And then the time you dread and rue,  
You find it underneath your shoe.*



## And finally...

Do you ever think that some place names lend themselves to an association with another country in a totally different part of the world?

Let me explain.

I have young friend from Melbourne, Australia, who has decided to settle in London. Incidentally, there is a suburb of Melbourne called Croydon. Isn't it funny that you'd go all the way over there and then name somewhere after this place? I suppose it must've been better when they did it.

Anyway, my friend was travelling back from town to Croydon when his train passed through Loughborough Junction. Any Aussie worth his salt would pronounce this as 'Lou-baroo-baroo' and expect any 'junction' to be a semi-deserted rail crossing for burly stockmen and their sheep. Maybe there would be a little wooden pub for the stockmen to sit outside, wearing their wide brimmed hats with the corks hanging down, scaring away the flies while they swig on cans of ice cold Swan lager. If you've passed through Loughborough Junction and seen anything like this lately, do let us know.

Which brings us to Addiscombe. My friend thinks this should be pronounced 'Addis-Com Bay' and should be a beach area, a bit like Bondi. We've already got loads of houses converted in flats for rental, so we're part the way there. All that's missing now is 16 hours of warm sunshine every day. Oh — and the sea and the beaches. A little imagination is all it takes, however; so, come Christmas Day, forget the roast and get out in the yard with the barbie. Put on your shorts and a t-shirt and make the most of Addis-Com Bay. And, if we all do it, who's going to think you're strange? *PP*

### Advertising in ASPRA magazine

Addiscombe & Shirley Park Residents' Association is always happy to welcome new advertisers to our magazine.

The magazine is published three times a year. Our Spring and Autumn issues go to more than 900 households and businesses. The Summer issue is delivered by hand to every household in our area – almost 2000 in all.

#### Our very reasonable advertisement rates for 2018 are:

Full page	£60	Trim size	148mm x 210mm
		Type area	128mm x 185mm
Half page	£35	Vertical	62mm x 185mm
		Horizontal	128mm x 90mm
Quarter page	£20	Vertical	62mm x 90mm
		Horizontal	128mm x 43mm
Bleed page (+4mm on bleed [outside] edges)			152mm x 218mm

All measurements give the width first.

For more details on cover rates, acceptable copy formats (jpeg 300dpi at true size, or bigger (not smaller); pdf with fonts embedded), cover rates, series discounts and all the other bits and pieces you need to know, please contact our astonishingly tall advertisement manager, Colin Gamm, by email at [adverts@theaspra.org.uk](mailto:adverts@theaspra.org.uk).

## ASPRA Road Representatives

All our road reps have volunteered to be the first point of contact for our members. They distribute our magazine, the occasional notice and collect the annual subs. There are regular road reps'/members' meetings to share information. We would welcome anyone wishing to assist, even in a small way. If you fancy volunteering please contact Dave Lee, [contact@theaspra.org.uk](mailto:contact@theaspra.org.uk) or at 38 Northampton Road.

Addiscombe Road (275-395)	Myra Rand	391 Addiscombe Road
Annandale Road	Patricia West	5 Annandale Road
Ashburton Avenue	Kiff Paddon	49 Ashburton Avenue
Ashling Road	Sheila Newbold	3 Baring Road
Ashurst Walk	Shirley Vine	11 Ashurst Walk
Baring Road	Helen Tilbury	27 Baring Road
Bingham Corner	Jenny Crook	29 Bingham Road
Bingham Road East (93-186)	Jenny Tighe	139 Bingham Road
Bingham Road West (1-94)	Jenny Crook	29 Bingham Road
Birch Tree Way	Sheena D'Souza	6 Birch Tree Way
Brockenhurst Road	Sheila Newbold	3 Baring Road
Carlyle Road	Chris Facey	19 Carlyle Road
Cheyne Walk	Jeet Bains	17 Cheyne Walk
Claremont Road	George Orlebar	30 Claremont Road
Colworth Road	Lyn Simmons	3 Colworth Road
Compton Road	Shashi & Shila Kotecha	21 Compton Road
Craigen Avenue	Jane Walsh	39 Craigen Avenue
Craven Road	Joy Morrall	7 Craven Road
Elmgrove Road	Claire & James Binnie	58 Kingscote Road
Fernhurst Road	Terry Eames	23 Fernhurst Road
Fryston Avenue	John Dellaway	34 Fryston Avenue
Glenthorne Avenue	Mike & Crys Rothon	33 Glenthorne Avenue
Greencourt Avenue	Mary Alexander	42 Selwood Road
Greencourt Gardens	Mary Alexander	42 Selwood Road
Harriet Gardens	Bill Callow	3 Harriet Gardens
Kingscote Road	Claire & James Binnie	58 Kingscote Road
Lower Addiscombe Road	Jonas Cradock	19 Colworth Road
Northampton Road	Bob Sleeman	50 Northampton Road
Parkview Road (evens)	Sheilagh Clark	53 Bingham Road
Parkview Road (odds)	Rinish Shah	37 Parkview Road
Peabody Close	Lorna Elliott	60 Glenthorne Avenue
Sefton Road	John Aitken	42 Sefton Road
Selwood Road (1-44)	Mary Alexander	42 Selwood Road
Selwood Road (45-87)	Jan Rutter	73 Selwood Road
Sherwood Road	Tom Wells	45 Sherwood Road
Shirley Park Road	Sarah Hills	58 Shirley Park Road
Shirley Road (1-52)	Margaret Grimsley	22 Shirley Road
Shirley Road (57-196)	Claire Brialey	59 Shirley Road
Whitethorn Gardens	Mike Foster	4 Whitethorn Gardens

Thinking of  
selling your  
home?

streets ahead  
ESTATE AGENTS



## Problem Solved

With over 28 years experience  
and 92 staff locally, call the  
experts to help you move.

020 8655 1300  
[www.streetsahead.info](http://www.streetsahead.info)